

TEAC

SERVICE MANUAL



CT - M 8 0 9 S V

1. Caution.....	2
2. Specification.....	6
3. BOM List	9
4. Alignment Procedure.....	42
5. Block Diagram.....	46
6. Schematic Diagram.....	47
7. PCB Layout.....	48

This manual is the latest at the time of printing, and does not include the modification which may be made after the printing, by the constant improvement of product.

CAUTION:

Use of controls, adjustments or procedures other than those specified herein may result in hazardous radiation exposure.



CAUTION
RISK OF ELECTRIC SHOCK DO NOT OPEN.



CAUTION: TO REDUCE THE RISK OF ELECTRICAL SHOCK, DO NOT REMOVE COVER (OR BACK). NO USER SERVICEABLE PARTS INSIDE. REFER SERVICING TO QUALIFIED SERVICE PERSONNEL.



The lightning flash with arrowhead symbol, with an equilateral triangle is intended to alert the user to the presence of uninsulated “dangerous voltage” within the product’s enclosure that may be of sufficient magnitude to constitute a risk of electric shock to the person.



The exclamation point within an equilateral triangle is intended to alert the user to the presence of important operating and maintenance (servicing) instructions in the literature accompanying the appliance.

WARNING: TO REDUCE RISK OF FIRE OR ELECTRIC SHOCK, DO NOT EXPOSE THIS APPLIANCE TO RAIN OR MOISTURE.

IMPORTANT SAFETY INSTRUCTIONS

CAUTION:

Read all of these instructions. Save these instructions for later use. Follow all Warnings and Instructions marked on the audio equipment.

1. Read Instructions- All the safety and operating instructions should be read before the product is operated.
2. Retain Instructions- The safety and operating instructions should be retained for future reference.
3. Heed Warnings- All warnings on the product and in the operating instructions should be adhered to.
4. Follow Instructions- All operating and use instructions should be followed.

FOR YOUR PERSONAL SAFETY

1. When the power cord or plug is damaged or frayed, unplug this television set from the wall outlet and refer servicing to qualified service personnel.
2. Do not overload wall outlets and extension cords as this can result in fire or electric shock.
3. Do not allow anything to rest on or roll over the power cord, and do not place the TV where power cord is subject to traffic or abuse. This may result in a shock or fire hazard.
4. Do not attempt to service this television set yourself as opening or removing covers may expose you to dangerous voltage or other hazards. Refer all servicing to qualified service personnel.
5. Never push objects of any kind into this television set through cabinet slots as they may touch dangerous voltage points or short out parts that could result in a fire or electric shock. Never spill liquid of any kind on the television set.
6. If the television set has been dropped or the cabinet has been damaged, unplug this television set from the wall outlet and refer servicing to qualified service personnel.
7. If liquid has been spilled into the television set, unplug this television set from the wall outlet and refer servicing to qualified service personnel.
8. Do not subject your television set to impact of any kind. Be particularly careful not to damage the picture tube surface.
9. Unplug this television set from the wall outlet before cleaning. Do not use liquid cleaners or aerosol cleaners. Use a damp cloth for cleaning.
- 10.1. Do not place this television set on an unstable cart, stand, or table. The television set may fall, causing serious injury to a child or an adult, and serious damage to the appliance. Use only with a cart or stand recommended by the manufacturer, or sold with the television set. Wall or shelf mounting should follow the manufacturer's instructions, and should use a mounting kit approved by the manufacturer.
- 10.2. An appliance and cart combination should be moved with care. Quick stops, excessive force, and uneven surfaces may cause the appliance and cart combination to overturn.



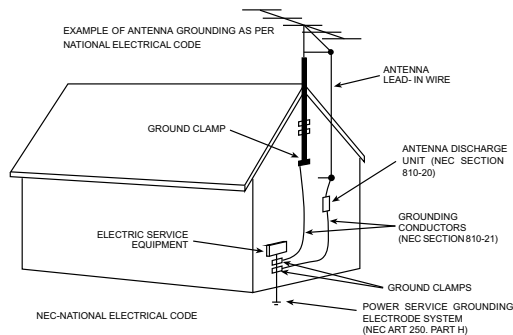
PROTECTION AND LOCATION OF YOUR SET

11. • Do not use this television set near water ... for example, near a bathtub, washbowl, kitchen sink, or laundry tub, in a wet basement, or near a swimming pool, etc.
 - Never expose the set to rain or water. If the set has been exposed to rain or water, unplug the set from the wall outlet and refer servicing to qualified service personnel.
12. Choose a place where light (artificial or sunlight) does not shine directly on the screen.
13. Avoid dusty places, since piling up of dust inside TV chassis may cause failure of the set when high humidity persists.
14. The set has slots, or openings in the cabinet for ventilation purposes, to provide reliable operation of the receiver, to protect it from overheating. These openings must not be blocked or covered.
 - Never cover the slots or openings with cloth or other material.
 - Never block the bottom ventilation slots of the set by placing it on a bed, sofa, rug, etc.
 - Never place the set near or over a radiator or heat register.
 - Never place the set in a "built-in" enclosure, unless proper ventilation is provided.

PROTECTION AND LOCATION OF YOUR SET

- 15.1. If an outside antenna is connected to the television set, be sure the antenna system is grounded so as to provide some protection against voltage surges and built up static charges, Section 810 of the National Electrical Code, NFPA No. 70-1975, provides information with respect to proper grounding of the mast and supporting structure, grounding of the lead-in wire to an antenna discharge unit, size of grounding conductors, location of antenna discharge unit, connection to grounding electrode, and requirements for the grounding electrode.

EXAMPLE OF ANTENNA GROUNDING AS PER NATIONAL ELECTRICAL CODE INSTRUCTIONS



- 15.2. Note to CATV system installer : (Only for the television set with CATV reception)

This reminder is provided to call the CATV system installer's attention to Article 820-40 of the NEC that provides guidelines for proper grounding and, in particular, specifies that the cable ground shall be connected to the grounding system of the building, as close to the point of cable entry as practical.

16. An outside antenna system should not be located in the vicinity of overhead power lines or other electric lights or power circuits, or where it can fall into such power lines or circuits. When installing an outside antenna system, extreme care should be taken to keep from touching such power lines or circuits as contact with them might be fatal.
17. For added protection for this television set during a lightning storm, or when it is left unattended and unused for long periods of time, unplug it from the wall outlet and disconnect the antenna. This will prevent damage due to lightning and power-line surges.

OPERATION OF YOUR SET

18. This television set should be operated only from the type of power source indicated on the marking label. If you are not sure of the type of power supply at your home, consult your television dealer or local power company. For television sets designed to operate from battery power, refer to the operating instructions.
19. If the television set does not operate normally by following the operating instructions, unplug this television set from the wall outlet and refer servicing to qualified service personnel. Adjust only those controls that are covered in the operating instructions as improper adjustment of other controls may result in damage and will often require extensive work by a qualified technician to restore the television set to normal operation.
20. When going on a holiday : If your television set is to remain unused for a period of time, for instance, when you go on a holiday, turn the television set " off " and unplug the television set from the wall outlet.

IF THE SET DOES NOT OPERATE PROPERLY

21. If you are unable to restore normal operation by following the detailed procedure in your operating instructions, do not attempt any further adjustment. Unplug the set and call your dealer or service technician.
22. Whenever the television set is damaged or fails, or a distinct change in performance indicates a need for service, unplug the set and have it checked by a professional service technician.
23. It is normal for some TV sets to make occasional snapping or popping sounds, particularly when being turned on or off. If the snapping or popping is continuous or frequent, unplug the set and consult your dealer or service technician.

FOR SERVICE AND MODIFICATION

24. Do not use attachments not recommended by the television set manufacturer as they may cause hazards.
25. When replacement parts are required, be sure the service technician has used replacement parts specified by the manufacturer that have the same characteristics as the original part. Unauthorized substitutions may result in fire, electric shock, or other hazards.
26. Upon completion of any service or repairs to the television set, ask the service technician to perform routine safety checks to determine that the television is in safe operating condition.

PFS2 FORMAT-1 Report	
Date:2004-6-24 15:10 ProductView.....: Report by.....:	Product: CT-M809SV
Specs / Products	
MasterData	
Customer Id	TEAC
Version	0.1
Status	New
Brand	TEAC
EAN	\
UPC	\
Reception	
+Tuning - presets/channels	100
+Tuning - technology	PLL
+Tuning - Indication	
+Freq Bands	
+Channels	CATV 470MHz
+IF Freq	PICTURE 38.9 MHz
+TV Systems Off Air	PAL B/G
+Add Systems Ext In	NTSC 3.58, NTSC 4.43, NTSC Play Back, PAL 60 IN AV mode
+TV Systems Multi	PAL
+Sound Systems	AV Stereo,German Stereo
Picture - Processing	
+Scan	Standard
+Scan Modes	4:3
+Wide Screen Switching	
+Combfilter	
+Picture Control	Brightness, Colour, Contrast, Color Temperature, Hue, Sharpness Cont Var, Smart Pict. 4 Modes Three kinds Color Temperatures:Normal, Cool, Warm
+Pict Enhancement	Black Stretch
+Pict Noise Reduction	
Picture - Display	
+Display Type	DV - CRT - RF
+Screen Format	4:3
+Size(Visual)" - size/vis. cm	34"
+Deflection System (CRT only)	
+Tube Technology (CRT only)	Black Matrix, Iron
+CRT Defl	
+CRT Gun	Stand Gun
+CRT Magn field	
+Resolution	
+Coating (only for D.V. sets)	
+White Point	
Sound	
+RMS Power Intern	
+RMS Power Extern	
+Surround Sound	
+Sound Features	Mute
+Sound Control	Volume,
Sound - Speakers	
+Speaker configuration	4 speakers
+Speakers used	Two tweeters, Two normal
+Speaker Size	
User Interface	
+Interface Name	L01- Full Interface
+Voice Control	
+Menu	Cursor Control
+Menu Colours	
+Menu Languages	English
+Special Features	Program preengage/soft start/ Calendar/ Notebook /Favorite channel/ Build-in Game / Hotel Lock / Surround System/ Channel Edit List/ Preset Lock/ Volume Lock/ AV Lock/ Panel Lock/ Child Lock/ Operation Lock
+Operational Features	Alternate Channel
+PP Features	
+Tuning/Install Features	Auto Store, Factory Mode, Fine Tuning, Manual Search/Store, Manual Sort, Service Mode

Date:2004-6-24 15:10	
ProductView.....:	
Report by.....:	
Specs / Products	Product: CT-M809SV
+Clock/Timer Functions	Clock, On/off timer, Sleep timer
+Local Controls Front	Channel +-, Volume +-, TV/AV,MENU, Power Switch,
+Local Controls Top	
+Indicators - screen	
+Indicators - front	RC Recvd LED, SB LED
+Numb of Loc Cont (incl Mains)	7
+Number of Ind. (incl Mains)	1
+Local Controls (Old)	
Remote Control	
Connectors Rear	
+Scart RGB+Y/C+CVBS	
+Scart RGB+CVBS	
+Scart CVBS+Y/C	
+Component In (Y/U/V) Cinch	X
+In Y/C+Cinch(CVBS+St)	
+In Y/C+Cinch(CVBS+Mo)	
+In Y/C+Cinch(St)	
+In BNC (CVBS)	
+In Cinch(CVBS+St)	X
+In Cinch(CVBS+Mo)	
+Out Cinch(CVBS+St)	X
+Out Cinch(CVBS+Mo)	
+Out Cinch Audio Stereo	
+Out Cinch Audio Mono	
+Out Cinch Dolby Surround	
+Out Cinch Subwoofer	
+Dig Audio Out	
+Loudspeakers	
+Control Busses	
+Feature Slot	
+ITV Smart Port	
+Terr. Antenna in	75 Ohms (IEC type)
Guide + IR Blaster Jack	
Connectors Front	
+In Y/C + Cinch(CVBS+St + Mo)	
+In Y/C + Cinch Stereo	
+In Cinch (CVBS + St)	
+In Cinch (CVBS+Mo +St)	
+Headphone Out	
+Feature Slot	
Connectors Side	
+In Y/C + Cinch(CVBS+St+ Mo)	x
+In Y/C + Cinch Stereo	
+In Cinch (CVBS + St+ Mo)	
+IN Cinch (CVBS + Mo)	
+Headphone Out	
Connectors Top	
+In Cinch (CVBS + St)	
+Headphone Out	
Connectors Mechanical	
+Headphone	
+Cinch A/V in/out	
+Cinch Component	
+Cinch Y/C	
Styling	
+Cabinet Name	3450
+Configuration	
+Graphics/Logo's	TEAC
-Cabinet Colour and Finish	
Silver Frost	
+Mechanics	
+Speaker Visibility	Standard
General	
+Segment	Standard 4:3, Expand 4:3, 16:9
+Chassis	M113B
+Software Delivery Mode	
+Software Version	
+Mains Voltage	240V
+Mains Frequency	50Hz
+Type Mains Cord	SAA , New Standard

Date:2004-6-24 15:10	
ProductView.....:	
Report by.....:	
Specs / Products	Product: CT-M809SV
Power Consumption (P)TV in On	
Power Consumption SB in Watts	Less than 10W
Power Consumption Semi SB in W	
+Power in "ON" for	
+Power in Standby for	
+Power in "OFF" for	
Weight (P)TV (incl. Packaging)	
Weight (P)TV (excl. Package)	
Weight AVUnit excl Packaging	
+INDICATION on BACKCOVER	
+Channel	
Final Equipment	
+Packaging - methods	
+Documents and manuals	
+Languages DFU	
+Cables Supplied	
+Antenna Supplied	
+Stand Supplied	
+Aux Equipm Supplied	
Packaging - width cm	
Packaging - height cm	
Packaging - depth cm	
Miscellaneous	
+EAN Indication	
+Approbation	SAA EMC CB
+Tests	
+Local Integration	
Various Perf. Param.	
+Service Call-Rate	
PIP/POP	
+Type	
+Features	No
Digital Reception	
+Transmission	
Built-in Data System	
+Text Standard	
+(Tele)text Features	No
+Nbr bckgrnd page / Mem Size	No
+Text Technology	No
+Digital Data handling	
+Program Guide	
Built-in Clock/Timer	
+Type	
+Features	
Built-in Radio	
+Type	
Built-in PC display	
+PC Synch	
+PC Control	
Built-in DVD drive	
+Type of Medium	
+Type of Deck	
+Version of Deck	
Phased Out Items	
+Tuner/Frontend	
+Sensitivity	
+CRT EHT	
+Lightning Protection	
+Account	
+XX(Radio Antenna in)	
+Non Volatile Memory	
+In Y/C + Cinch(CVBS+Mo)	
Version of deck	

Item No.	Description	Quantity Req.	Designator	Remarks
08-029ABE-CR3		1		
10-1N4148-ABX	DIODE 1N4148 (SWITCHING)	1	D501	
10-1N4148-ABX	DIODE 1N4148 (SWITCHING)	1	D502	
11-A562TM-OBX	TRANSISTOR 2SA562TM-0	1	Q507	
11-SC1815-YBX	TRANSISTOR 2SC1815Y	1	Q502	
11-SC1815-YBX	TRANSISTOR 2SC1815Y	1	Q504	
11-SC1815-YBX	TRANSISTOR 2SC1815Y	1	Q506	
11-SC4544-OAX	TRANSISTOR 2SC4544	1	Q501	
11-SC4544-OAX	TRANSISTOR 2SC4544	1	Q503	
11-SC4544-OAX	TRANSISTOR 2SC4544	1	Q505	
18-CB0102-JNX	RES. C.F. 1K OHM 1/6W +/-5%	1	R515	
18-CB0272-JNX	RES. C.F. 2.7k OHM 1/6W +/-5%	1	R514	
18-CB0561-JNX	RES. C.F. 560 OHM 1/6W +/-5%	1	R501	
18-CB0561-JNX	RES. C.F. 560 OHM 1/6W +/-5%	1	R505	
18-CB0561-JNX	RES. C.F. 560 OHM 1/6W +/-5%	1	R510	
18-CB0681-JNX	RES. C.F. 680 OHM 1/6W +/-5%	1	R502	
18-CB0681-JNX	RES. C.F. 680 OHM 1/6W +/-5%	1	R506	
18-CB0681-JNX	RES. C.F. 680 OHM 1/6W +/-5%	1	R509	
18-CB0681-JNX	RES. C.F. 680 OHM 1/6W +/-5%	1	R522	
18-CB0681-JNX	RES. C.F. 680 OHM 1/6W +/-5%	1	R503	
18-CB0681-JNX	RES. C.F. 680 OHM 1/6W +/-5%	1	R508	
18-CB0681-JNX	RES. C.F. 680 OHM 1/6W +/-5%	1	R513	
18-CB0681-JNX	RES. C.F. 680 OHM 1/6W +/-5%	1	R511	
18-FE0272-JNX	RES. M.O. 2.7K OHM 1/2W +/-5%	1	R519	
18-FE0272-JNX	RES. M.O. 2.7K OHM 1/2W +/-5%	1	R520	
18-FE0272-JNX	RES. M.O. 2.7K OHM 1/2W +/-5%	1	R521	
18-FG0183-JHX	RES. M.O. 18K OHM 2W +/-5%	1	R516	
18-FG0183-JHX	RES. M.O. 18K OHM 2W +/-5%	1	R517	
18-FG0183-JHX	RES. M.O. 18K OHM 2W +/-5%	1	R518	
25-BCB471-M1X	CAP. ELEC 470 UF 16V +/-20%	1	C506	
26-AMK103-MEX	CAP. CER 0.01UF 2KVDC +/-20%	1	C505	

Item No.	Description	Quantity Req.	Designator	Remarks
27-MBC474-JOX	CAP. M.P.E 0.47UF 63V +/-5%	1	C508	
26-EBP103-ZFX	CAP. CER 0.01UF 50V +80/-20% F	1	C509	
26-EBP391-JCX	CAP. CER. 390PF 50V +/-5% CH	1	C502	
26-EBP391-JCX	CAP. CER. 390PF 50V +/-5% CH	1	C501	
26-EBP471-JCX	CAP. CER 470PF 50V +/-5% CH	1	C503	
34-R569K2-1BX	COIL CHOKE 5.6 UH +/-10%	1	L503	
40-02501C-CRH1X	P. C. B CRT BD	1		
41-WJ0050-B00	WIRE BARE JUMPER 5MM	1	L504	
41-WJ0060-B00	WIRE BARE JUMPER 6mm	1	R504	
41-WJ0060-B00	WIRE BARE JUMPER 6mm	1	R507	
41-WJ0060-B00	WIRE BARE JUMPER 6mm	1	R512	
41-WJ0075-B00	WIRE BARE JUMPER 7.5MM	1	J503	
46-10967W-01X	PIN BASE *1 TJC1-1A	1		P501 FOR CRT GROUNDING HOUS.
46-30615H-04X	HS 4P24 460 F/W TJC3-4Y/SCN-4	1		P502 FOR M. BD P421
47-CRT004-XXO	CRT SOCKET GZS10-2-AC2	1	S501	
10-1N4148-ABX	DIODE 1N4148 (SWITCHING)	1	L501	("+" TO P503"1")
41-WJ0050-B00	WIRE BARE JUMPER 5MM	1	L502	
25-BLA100-M1X	CAP. ELEC 10 UF 250V +/-20%	1	C504	
46-30954H-05X	HS UL2468 #24 580 5C/TS	1		P503 FOR M. BD P201
08-34504E-FBY	ASS'Y - FRONT CTL BD	1		
18-CB0103-JNX	RES. C.F. 10K OHM 1/6W +/-5%	1	R028A	
18-CB0152-JNX	RES. C.F. 1.5k OHM 1/6W +/-5%	1	R023A	
18-CB0182-JNX	RES. C.F. 1.8K OHM 1/6W +/-5%	1	R024A	
18-CB0272-JNX	RES. C.F. 2.7k OHM 1/6W +/-5%	1	R025A	
18-CB0432-JNX	RES. C.F. 4.3K OHM 1/6W +/-5%	1	R026A	
18-CB0622-JNX	RES. C.F. 6.2k OHM 1/6W +/-5%	1	R027A	
46-31788H-02X	HS 2P22 350 TJC3-2Y/SCN-2Y	1		P001 TO M. BD P005A
40-3450MT-FBA	P. C. B. FRONT CTL BD	1		
48-TAC026-XXO	TACT SWITCH KFC-A06A-12	1	S001	
48-TAC026-XXO	TACT SWITCH KFC-A06A-12	1	S002	
48-TAC026-XXO	TACT SWITCH KFC-A06A-12	1	S003	

Item No.	Description	Quantity Req.	Designator	Remarks
48-TAC026-XX0	TACT SWITCH KFC-A06A-12	1	S004	
48-TAC026-XX0	TACT SWITCH KFC-A06A-12	1	S005	
48-TAC026-XX0	TACT SWITCH KFC-A06A-12	1	S006	
48-TAC026-XX0	TACT SWITCH KFC-A06A-12	1	S007	
08-00034E-MAN		1		
10-0FR104-FBX	DIODE FR104 (FAST RECTIFIER)	1	D412	
10-0FR104-FBX	DIODE FR104 (FAST RECTIFIER)	1	D421	
10-0FR104-FBX	DIODE FR104 (FAST RECTIFIER)	1	D441	
10-0FR104-FBX	DIODE FR104 (FAST RECTIFIER)	1	D431	
10-0FR104-FBX	DIODE FR104 (FAST RECTIFIER)	1	D432	
10-1N4001-EBX	DIODE 1N4001 (RECTIFIER)	1	D301	
10-1N4148-ABX	DIODE 1N4148 (SWITCHING)	1	D201	
10-1N4148-ABX	DIODE 1N4148 (SWITCHING)	1	D202	
10-1N4148-ABX	DIODE 1N4148 (SWITCHING)	1	D203	
10-1N4148-ABX	DIODE 1N4148 (SWITCHING)	1	D204	
10-1N4148-ABX	DIODE 1N4148 (SWITCHING)	1	D205	
10-1N4148-ABX	DIODE 1N4148 (SWITCHING)	1	D602	
10-1N4148-ABX	DIODE 1N4148 (SWITCHING)	1	D603	
10-1N4148-ABX	DIODE 1N4148 (SWITCHING)	1	D002	
10-1N4148-ABX	DIODE 1N4148 (SWITCHING)	1	D003	
10-1N4148-ABX	DIODE 1N4148 (SWITCHING)	1	D310	
10-1N4148-ABX	DIODE 1N4148 (SWITCHING)	1	D305B	
10-79C5V1-DBX	DIODE ZENER 5V1 1/2W 5%	1	D001	
10-79C8V2-DBX	DIODE ZENER 8V2 1/2W 5%	1	D303	
11-630MFP-OAX	TRANSISTOR 1RF630MFP	1	Q414	
11-C124ES-OBX	TRANSISTOR PDTC124ES (NPN)	1	Q001	
11-C124ES-OBX	TRANSISTOR PDTC124ES (NPN)	1	Q002	
11-DD3402-OAX	TRANSISTOR 3DD3402	1	Q411	
11-SA1015-YBX	TRANSISTOR 2SA1015Y	1	Q008	
11-SA1015-YBX	TRANSISTOR 2SA1015Y	1	Q215	
11-SA1015-YBX	TRANSISTOR 2SA1015Y	1	Q412	

Item No.	Description	Quantity Req.	Designator	Remarks
11-SA1015-YBX	TRANSISTOR 2SA1015Y	1	Q413	
11-SA1015-YBX	TRANSISTOR 2SA1015Y	1	Q601	
11-SA1015-YBX	TRANSISTOR 2SA1015Y	1	Q912	
11-SC1815-YBX	TRANSISTOR 2SC1815Y	1	Q007	
11-SC1815-YBX	TRANSISTOR 2SC1815Y	1	Q202	
11-SC1815-YBX	TRANSISTOR 2SC1815Y	1	Q909	
11-SC1815-YBX	TRANSISTOR 2SC1815Y	1	Q910	
11-SC1815-YBX	TRANSISTOR 2SC1815Y	1	Q911	
11-SC1815-YBX	TRANSISTOR 2SC1815Y	1	Q913	
11-SC1815-YBX	TRANSISTOR 2SC1815Y	1	Q914	
11-SC1815-YBX	TRANSISTOR 2SC1815Y	1	Q214	
11-SC1815-YBX	TRANSISTOR 2SC1815Y	1	Q630	
11-SC1815-YBX	TRANSISTOR 2SC1815Y	1	Q631	
11-SC2482-OBX	TRANSISTOR 2SC2482	1	Q401	
11-SC3779-DBX	TRANSISTOR 2SC3779D (RF AMPL)	1	Q101	
13-000040-52P	IC 4052	1	IC901	
13-000040-52P	IC 4052	1	IC902	
13-OTDA81-77S	IC TDA8177	1	IC301	
13-NJW113-6LP	IC NJW1136L	1	IC601	
18-CB0101-JNX	RES. C. F. 100 OHM 1/6W +/-5%	1	R203	
18-CB0101-JNX	RES. C. F. 100 OHM 1/6W +/-5%	1	R213	
41-WJ0060-B00	WIRE BARE JUMPER 6mm	1	R930	
18-CB0101-JNX	RES. C. F. 100 OHM 1/6W +/-5%	1	R101	
18-CB0101-JNX	RES. C. F. 100 OHM 1/6W +/-5%	1	R100	
18-CB0102-JNX	RES. C. F. 1K OHM 1/6W +/-5%	1	R003	
18-CB0102-JNX	RES. C. F. 1K OHM 1/6W +/-5%	1	R004	
18-CB0102-JNX	RES. C. F. 1K OHM 1/6W +/-5%	1	R031	
18-CB0102-JNX	RES. C. F. 1K OHM 1/6W +/-5%	1	R032	
18-CB0102-JNX	RES. C. F. 1K OHM 1/6W +/-5%	1	R453	
18-CB0102-JNX	RES. C. F. 1K OHM 1/6W +/-5%	1	R904	
18-CB0102-JNX	RES. C. F. 1K OHM 1/6W +/-5%	1	R906	

Item No.	Description	Quantity Req.	Designator	Remarks
18-CB0102-JNX	RES. C. F. 1K OHM 1/6W +/-5%	1	R923	
18-CB0102-JNX	RES. C. F. 1K OHM 1/6W +/-5%	1	R924	
18-CB0102-JNX	RES. C. F. 1K OHM 1/6W +/-5%	1	R925	
18-CB0102-JNX	RES. C. F. 1K OHM 1/6W +/-5%	1	R926	
18-CB0102-JNX	RES. C. F. 1K OHM 1/6W +/-5%	1	R931	
18-CB0331-JNX	RES. C.F. 330 OHM 1/6W +/-5%	1	R944	
18-CB0102-JNX	RES. C. F. 1K OHM 1/6W +/-5%	1	R950	
18-CB0102-JNX	RES. C. F. 1K OHM 1/6W +/-5%	1	R950A	
18-CB0102-JNX	RES. C. F. 1K OHM 1/6W +/-5%	1	R951	
18-CB0102-JNX	RES. C. F. 1K OHM 1/6W +/-5%	1	R951A	
18-CB0102-JNX	RES. C. F. 1K OHM 1/6W +/-5%	1	R910	
18-CB0102-JNX	RES. C. F. 1K OHM 1/6W +/-5%	1	R912	
18-CB0102-JNX	RES. C. F. 1K OHM 1/6W +/-5%	1	R604	
18-CB0102-JNX	RES. C. F. 1K OHM 1/6W +/-5%	1	R611	
18-CB0103-JNX	RES. C. F. 10K OHM 1/6W +/-5%	1	R001A	
18-CB0103-JNX	RES. C. F. 10K OHM 1/6W +/-5%	1	R033	
18-CB0103-JNX	RES. C. F. 10K OHM 1/6W +/-5%	1	R035	
18-CB0103-JNX	RES. C. F. 10K OHM 1/6W +/-5%	1	R012	
18-CB0103-JNX	RES. C. F. 10K OHM 1/6W +/-5%	1	R224	
18-CB0103-JNX	RES. C. F. 10K OHM 1/6W +/-5%	1	R227	
18-CB0103-JNX	RES. C. F. 10K OHM 1/6W +/-5%	1	R246	
18-CB0103-JNX	RES. C. F. 10K OHM 1/6W +/-5%	1	R013	
18-CB0103-JNX	RES. C. F. 10K OHM 1/6W +/-5%	1	R607	
18-CB0103-JNX	RES. C. F. 10K OHM 1/6W +/-5%	1	R247	
18-CB0103-JNX	RES. C. F. 10K OHM 1/6W +/-5%	1	R248	
18-CB0103-JNX	RES. C. F. 10K OHM 1/6W +/-5%	1	R252	
18-CB0103-JNX	RES. C. F. 10K OHM 1/6W +/-5%	1	R314	
18-CB0103-JNX	RES. C. F. 10K OHM 1/6W +/-5%	1	R617	
18-CB0104-JNX	RES. C. F. 100K OHM 1/6W +/-5%	1	R034	
18-CB0104-JNX	RES. C. F. 100K OHM 1/6W +/-5%	1	R210	
18-CB0104-JNX	RES. C. F. 100K OHM 1/6W +/-5%	1	R943	

Item No.	Description	Quantity Req.	Designator	Remarks
18-CB0104-JNX	RES. C.F. 100K OHM 1/6W +/-5%	1	R235	
18-CB0104-JNX	RES. C.F. 100K OHM 1/6W +/-5%	1	R236	
18-CB0104-JNX	RES. C.F. 100K OHM 1/6W +/-5%	1	R907	
18-CB0122-JNX	RES. C.F. 1.2k OHM 1/6W +/-5%	1	R253	
18-CB0123-JNX	RES. C.F. 12k OHM 1/6W +/-5%	1	R310	
18-CB0151-JNX	RES. C.F. 150 OHM 1/6W +/-5%	1	R102	
18-CB0151-JNX	RES. C.F. 150 OHM 1/6W +/-5%	1	R108	
18-CB0151-JNX	RES. C.F. 150 OHM 1/6W +/-5%	1	R228	
18-CB0183-JNX	RES. C.F. 18k OHM 1/6W +/-5%	1	R933	
18-CB0183-JNX	RES. C.F. 18k OHM 1/6W +/-5%	1	R225	
18-CB0202-JNX	RES. C.F. 2K OHM 1/6W +/-5%	1	R412	
18-CB0220-JNX	RES. C.F. 22 OHM 1/6W +/-5%	1	R027	
18-CB0220-JNX	RES. C.F. 22 OHM 1/6W +/-5%	1	R028	
18-CB0220-JNX	RES. C.F. 22 OHM 1/6W +/-5%	1	R104	
18-CB0221-JNX	RES. C.F. 220 OHM 1/6W +/-5%	1	R401	
18-CB0151-JNX	RES. C.F. 150 OHM 1/6W +/-5%	1	R928	
18-CB0151-JNX	RES. C.F. 150 OHM 1/6W +/-5%	1	R929	
18-CB0222-JNX	RES. C.F. 2.2k OHM 1/6W +/-5%	1	R615	
18-CB0222-JNX	RES. C.F. 2.2k OHM 1/6W +/-5%	1	R903	
18-CB0222-JNX	RES. C.F. 2.2k OHM 1/6W +/-5%	1	R946	
18-CB0222-JNX	RES. C.F. 2.2k OHM 1/6W +/-5%	1	R946A	
18-CB0222-JNX	RES. C.F. 2.2k OHM 1/6W +/-5%	1	R417	
18-CB0222-JNX	RES. C.F. 2.2k OHM 1/6W +/-5%	1	R423	
18-CB0222-JNX	RES. C.F. 2.2k OHM 1/6W +/-5%	1	R420A	
18-CB0222-JNX	RES. C.F. 2.2k OHM 1/6W +/-5%	1	R909	
18-CB0223-JNX	RES. C.F. 22k OHM 1/6W +/-5%	1	R905	
18-CB0223-JNX	RES. C.F. 22k OHM 1/6W +/-5%	1	R932	
18-CB0223-JNX	RES. C.F. 22k OHM 1/6W +/-5%	1	R938	
18-CB0223-JNX	RES. C.F. 22k OHM 1/6W +/-5%	1	R939	
18-CB0223-JNX	RES. C.F. 22k OHM 1/6W +/-5%	1	R942	
18-CB0223-JNX	RES. C.F. 22k OHM 1/6W +/-5%	1	R940	

Item No.	Description	Quantity Req.	Designator	Remarks
18-CB0223-JNX	RES. C.F. 22k OHM 1/6W +/-5%	1	R941	
18-CB0223-JNX	RES. C.F. 22k OHM 1/6W +/-5%	1	R630	
18-CB0223-JNX	RES. C.F. 22k OHM 1/6W +/-5%	1	R632	
18-CB0223-JNX	RES. C.F. 22k OHM 1/6W +/-5%	1	R911	
18-CB0223-JNX	RES. C.F. 22k OHM 1/6W +/-5%	1	R913	
18-CB0223-JNX	RES. C.F. 22k OHM 1/6W +/-5%	1	R220	
18-CB0224-JNX	RES. C.F. 220k OHM 1/6W +/-5%	1	R240	
18-CB0271-JNX	RES. C.F. 270 OHM 1/6W +/-5%	1	R243	
18-CB0271-JNX	RES. C.F. 270 OHM 1/6W +/-5%	1	R244	
18-CB0271-JNX	RES. C.F. 270 OHM 1/6W +/-5%	1	R245	
18-CB0303-JNX	RES. C.F. 30K OHM 1/6W +/-5%	1	R241	
18-CB0331-JNX	RES. C.F. 330 OHM 1/6W +/-5%	1	R214	
18-CB0331-JNX	RES. C.F. 330 OHM 1/6W +/-5%	1	R608	
18-CB0331-JNX	RES. C.F. 330 OHM 1/6W +/-5%	1	R609	
18-CB0331-JNX	RES. C.F. 330 OHM 1/6W +/-5%	1	R201	
18-CB0332-JNX	RES. C.F. 3.3k OHM 1/6W +/-5%	1	R212	
18-CB0332-JNX	RES. C.F. 3.3k OHM 1/6W +/-5%	1	R216	
18-CB0470-JNX	RES. C.F. 47 OHM 1/6W +/-5%	1	R927	
18-CB0471-JNX	RES. C.F. 470 OHM 1/6W +/-5%	1	R036	
18-CB0471-JNX	RES. C.F. 470 OHM 1/6W +/-5%	1	R103	
18-CB0471-JNX	RES. C.F. 470 OHM 1/6W +/-5%	1	R211	
18-CB0472-JNX	RES. C.F. 4.7k OHM 1/6W +/-5%	1	R010	
18-CB0472-JNX	RES. C.F. 4.7k OHM 1/6W +/-5%	1	R315	
18-CB0473-JNX	RES. C.F. 47K OHM 1/6W +/-5%	1	R226	
18-CB0473-JNX	RES. C.F. 47K OHM 1/6W +/-5%	1	R610	
18-CB0512-JNX	RES. C.F. 5.1k OHM 1/6W +/-5%	1	R219	
18-CB0560-JNX	RES. C.F. 56 OHM 1/6W +/-5%	1	R107	
18-CB0681-JNX	RES. C.F. 680 OHM 1/6W +/-5%	1	R106	
18-CB0683-JNX	RES. C.F. 68K OHM 1/6W +/-5%	1	R418	
18-CB0750-JNX	RES. C.F. 75 OHM 1/6W +/-5%	1	R922	
18-CB0752-JNX	RES. C.F. 7.5K OHM 1/6W +/-5%	1	R256	

Item No.	Description	Quantity Req.	Designator	Remarks
18-CB0820-JNX	RES. C.F. 82 OHM 1/6W +/-5%	1	R908	
18-CB0820-JNX	RES. C.F. 82 OHM 1/6W +/-5%	1	R902	
18-CB0822-JNX	RES. C.F. 8.2K OHM 1/6W +/-5%	1	R202	
18-CD0479-JNX	RES. C.F. 4.7 OHM 1/4W +/-5%	1	R030	
18-CD0829-JNX	RES. C.F. 8.2 OHM 1/4W +/-5%	1	R620	
18-CD0829-JNX	RES. C.F. 8.2 OHM 1/4W +/-5%	1	R613	
18-CE0271-JNX	RES. C.F. 270 OHM 1/2W +/-5%	1	R209	
18-CE0472-JNX	RES. C.F. 4.7k OHM 1/2W +/-5%	1	R316	
18-DB0103-FNX	RES. M.F. 10K OHM 1/6W +/-1%	1	R302	
18-DB0104-FNX	RES. M.F. 100K OHM 1/6W +/-1%	1	R303	
18-DB0123-FNX	RES. M.F. 12K OHM 1/6W +/-1%	1	R312	
18-DB0912-FNX	RES. M.F. 9.1K OHM 1/6W +/-1%	1	R311	
18-EG0109-JHX	RES. FUS. 1 OHM 2W +/-5%	1	R422	
18-FF0242-JGX	RES. M.O. 2.4K OHM 1W +/-5%	1	R402	
18-FF0681-JGX	RES. M.O. 680 OHM 1W +/-5%	1	R419	
18-FG0103-JHX	RES. M.O. 10K OHM 2W +/-5%	1	R421	
18-FG0399-JHX	RES. M.O. 3.9 OHM 2W +/-5%	1	R415	
18-GM0302-KUX1	RES.C.C. 7W 3KOHM +/-10%	1	R404	
25-264610-M1X	CAP. ELEC 4.7UF 50V +/-20% NP	1	C415	
25-BCB100-M1X	CAP. ELEC 10 UF 16V +/-20%	1	C021	
25-BCB100-M1X	CAP. ELEC 10 UF 16V +/-20%	1	C033	
25-BCB100-M1X	CAP. ELEC 10 UF 16V +/-20%	1	C228	
25-BCB100-M1X	CAP. ELEC 10 UF 16V +/-20%	1	C235	
25-BCB100-M1X	CAP. ELEC 10 UF 16V +/-20%	1	C902	
25-BCB100-M1X	CAP. ELEC 10 UF 16V +/-20%	1	C903	
25-BCB100-M1X	CAP. ELEC 10 UF 16V +/-20%	1	C911	
25-BCB100-M1X	CAP. ELEC 10 UF 16V +/-20%	1	C912	
25-BCB100-M1X	CAP. ELEC 10 UF 16V +/-20%	1	C917	
25-BCB100-M1X	CAP. ELEC 10 UF 16V +/-20%	1	C905	
25-BCB100-M1X	CAP. ELEC 10 UF 16V +/-20%	1	C906	
25-BCB101-M1X	CAP. ELEC 100 UF 16V +/-20%	1	C219	

Item No.	Description	Quantity Req.	Designator	Remarks
25-BCB101-M1X	CAP. ELEC 100 UF 16V +/-20%	1	C233	
25-BCB101-M1X	CAP. ELEC 100 UF 16V +/-20%	1	C914	
25-BCB101-M1X	CAP. ELEC 100 UF 16V +/-20%	1	C930	
25-BCB101-M1X	CAP. ELEC 100 UF 16V +/-20%	1	C930A	
25-BCB101-M1X	CAP. ELEC 100 UF 16V +/-20%	1	C028	
25-BCB101-M1X	CAP. ELEC 100 UF 16V +/-20%	1	C612	
25-BCB221-M1X	CAP. ELEC 220 UF 16V +/-20%	1	C910	
25-BCB331-M1X	CAP. ELEC 330 UF 16V +/-20%	1	C630	
25-BCB470-M1X	CAP. ELEC 47 UF 16V +/-20%	1	C213	
25-BCB470-M1X	CAP. ELEC 47 UF 16V +/-20%	1	C901	
25-BCB470-M1X	CAP. ELEC 47 UF 16V +/-20%	1	C920	
25-BCB470-M1X	CAP. ELEC 47 UF 16V +/-20%	1	C229	
25-BCB470-M1X	CAP. ELEC 47 UF 16V +/-20%	1	C631	
25-BCB470-M1X	CAP. ELEC 47 UF 16V +/-20%	1	C904	
25-BDA102-M1X	CAP. ELEC 1000 UF 25V +/-20%	1	C623	
25-BDB101-M1X	CAP. ELEC 100 UF 25V +/-20%	1	C308	
25-BDB470-M1X	CAP. ELEC 47 UF 25V +/-20%	1	C632	
25-BEA102-M1X	CAP. ELEC 1000 UF 35V +/-20%	1	C432	
25-BEA221-M1X	CAP. ELEC 220 UF 35V +/-20%	1	C301	
25-BEB101-M1X	CAP. ELEC 100 UF 35V +/-20%	1	C302	
25-BFB101-M1X	CAP. ELEC 100 UF 50V +/-20%	1	C224	
25-BFB101-M1X	CAP. ELEC 100 UF 50V +/-20%	1	C105	
25-BFB101-M1X	CAP. ELEC 100 UF 50V +/-20%	1	C237	
25-BFB101-M1X	CAP. ELEC 100 UF 50V +/-20%	1	C104	
25-BFB109-M1X	CAP. ELEC 1 UF 50V +/-20%	1	C218	
25-BFB109-M1X	CAP. ELEC 1 UF 50V +/-20%	1	C221	
25-GFB228-K1X	CAP. ELEC 0.22 UF 50V +/-10%	1	C216	
25-BFB229-M1X	CAP. ELEC 2.2 UF 50V +/-20%	1	C601	
25-BFB229-M1X	CAP. ELEC 2.2 UF 50V +/-20%	1	C607	
25-BFB229-M1X	CAP. ELEC 2.2 UF 50V +/-20%	1	C650	
25-BFB229-M1X	CAP. ELEC 2.2 UF 50V +/-20%	1	C657	

Item No.	Description	Quantity Req.	Designator	Remarks
25-BFB478-M1X	CAP. ELEC 0.47 UF 50V +/-20%	1	C227	
25-GFB478-K1X	CAP. ELEC 0.47 UF 50V 10%CEC-K	1	C246	
27-MBC474-J0X	CAP. M.P.E 0.47UF 63V +/-5%	1	C248	
25-BFB479-M1X	CAP. ELEC 4.7 UF 50V +/-20%	1	C223	
25-BFB479-M1X	CAP. ELEC 4.7 UF 50V +/-20%	1	C304	
25-BFB479-M1X	CAP. ELEC 4.7 UF 50V +/-20%	1	C614	
25-BFB479-M1X	CAP. ELEC 4.7 UF 50V +/-20%	1	C615	
25-BFB479-M1X	CAP. ELEC 4.7 UF 50V +/-20%	1	C616	
25-BFB479-M1X	CAP. ELEC 4.7 UF 50V +/-20%	1	C617	
25-BFB479-M1X	CAP. ELEC 4.7 UF 50V +/-20%	1	C618	
25-BFB479-M1X	CAP. ELEC 4.7 UF 50V +/-20%	1	C619	
25-BFB479-M1X	CAP. ELEC 4.7 UF 50V +/-20%	1	C620	
25-BFB479-M1X	CAP. ELEC 4.7 UF 50V +/-20%	1	C101	
25-BKA100-M1X	CAP. ELEC 10 UF 200V +/-20%	1	C421	
25-BLF100-M1X	CAP. ELEC 10 UF 250V +/-20%	1	C442	
26-ABC104-ZFX	CAP. CER 0.1 UF 50V +80-20% F	1	C624	
26-ABC104-ZFX	CAP. CER 0.1 UF 50V +80-20% F	1	C611	
26-ABC104-ZFX	CAP. CER 0.1 UF 50V +80-20% F	1	C622	
26-ABC104-ZFX	CAP. CER 0.1 UF 50V +80-20% F	1	C643	
26-AIC221-KBX	CAP. CER 220 PF 500V +/-10% B	1	C431	
26-AIC221-KBX	CAP. CER 220 PF 500V +/-10% B	1	C441	
26-AIC221-KBX	CAP. CER 220 PF 500V +/-10% B	1	C433	
26-AIC332-KBX	CAP. CER 3300 PF 500V +/-10% B	1	C402	
26-AIC391-KBX	CAP. CER 390 PF 500V +/-10% B	1	C403	
26-EBP102-KBX	CAP. CER 1000 PF 50V +/-10% B	1	C109	
26-EBP102-KBX	CAP. CER 1000 PF 50V +/-10% B	1	C226	
26-ABC102-KBX	CAP. CER 1000 PF 50V +/-10% B	1	C416	
26-ABC102-KBX	CAP. CER 1000 PF 50V +/-10% B	1	C610	
26-ABC102-KBX	CAP. CER 1000 PF 50V +/-10% B	1	C651	
26-EBP103-ZFX	CAP. CER 0.01UF 50V +80/-20% F	1	C022	
26-EBP103-ZFX	CAP. CER 0.01UF 50V +80/-20% F	1	C029	

Item No.	Description	Quantity Req.	Designator	Remarks
26-EBP103-ZFX	CAP. CER 0.01UF 50V +80/-20% F	1	C234	
26-EBP103-ZFX	CAP. CER 0.01UF 50V +80/-20% F	1	C238	
26-EBP103-ZFX	CAP. CER 0.01UF 50V +80/-20% F	1	C244	
26-EBP103-ZFX	CAP. CER 0.01UF 50V +80/-20% F	1	C250	
26-EBP103-ZFX	CAP. CER 0.01UF 50V +80/-20% F	1	C921	
26-EBP103-ZFX	CAP. CER 0.01UF 50V +80/-20% F	1	C931A	
26-EBP103-ZFX	CAP. CER 0.01UF 50V +80/-20% F	1	C922	
26-EBP103-ZFX	CAP. CER 0.01UF 50V +80/-20% F	1	C923	
26-EBP103-ZFX	CAP. CER 0.01UF 50V +80/-20% F	1	C034	
26-EBP103-ZFX	CAP. CER 0.01UF 50V +80/-20% F	1	C106	
26-EBP103-ZFX	CAP. CER 0.01UF 50V +80/-20% F	1	C107	
26-EBP103-ZFX	CAP. CER 0.01UF 50V +80/-20% F	1	C108	
26-EBP103-ZFX	CAP. CER 0.01UF 50V +80/-20% F	1	C214	
26-EBP103-ZFX	CAP. CER 0.01UF 50V +80/-20% F	1	C220	
26-EBP103-ZFX	CAP. CER 0.01UF 50V +80/-20% F	1	C225	
26-EBP103-ZFX	CAP. CER 0.01UF 50V +80/-20% F	1	C418	
26-EBP103-ZFX	CAP. CER 0.01UF 50V +80/-20% F	1	C913	
26-EBP103-ZFX	CAP. CER 0.01UF 50V +80/-20% F	1	C103	
26-EBP220-JCX	CAP. CER 22PF 50V +/-5% CH	1	C252	
26-EBP221-JCX	CAP. CER 220PF 50V +/-5% CH	1	C907	
26-EBP221-JCX	CAP. CER 220PF 50V +/-5% CH	1	C027	
26-EBP221-JCX	CAP. CER 220PF 50V +/-5% CH	1	C030	
26-EBP222-KBX	CAP. CER 2200PF 50V +/-10% B	1	C217	
26-EBP222-KBX	CAP. CER 2200PF 50V +/-10% B	1	C231	
26-EBP222-KBX	CAP. CER 2200PF 50V +/-10% B	1	C306	
26-EBP330-JCX	CAP. CER 33PF 50V +/-5% CH	1	C916	
26-EBP390-JCX	CAP. CER 39PF 50V +/-5% CH	1	C031	
26-EBP390-JCX	CAP. CER 39PF 50V +/-5% CH	1	C032	
26-EBP471-JCX	CAP. CER 470PF 50V +/-5% CH	1	C239	
27-MBC103-JOX	CAP. M. P. E 0.01UF 63V+/-5%	1	C626	
27-MBC103-JOX	CAP. M. P. E 0.01UF 63V+/-5%	1	C628	

Item No.	Description	Quantity Req.	Designator	Remarks
27-MBC104-J0X	CAP. M.P.E 0.1 UF 63V +/-5%	1	C241	
27-MBC104-J0X	CAP. M.P.E 0.1 UF 63V +/-5%	1	C243	
27-MBC104-J0X	CAP. M.P.E 0.1 UF 63V +/-5%	1	C625	
27-MBC104-J0X	CAP. M.P.E 0.1 UF 63V +/-5%	1	C633	
27-MBC104-J0X	CAP. M.P.E 0.1 UF 63V +/-5%	1	C251	
27-MBC104-J0X	CAP. M.P.E 0.1 UF 63V +/-5%	1	C242	
27-MBC104-J0X	CAP. M.P.E 0.1 UF 63V +/-5%	1	C602	
27-MBC104-J0X	CAP. M.P.E 0.1 UF 63V +/-5%	1	C603	
27-MBC104-J0X	CAP. M.P.E 0.1 UF 63V +/-5%	1	C605	
27-MBC104-J0X	CAP. M.P.E 0.1 UF 63V +/-5%	1	C652	
27-MBC104-J0X	CAP. M.P.E 0.1 UF 63V +/-5%	1	C253	
27-MBC222-J0X	CAP. M.P.E 0.0022UF 63V +/-5%	1	C653	
27-MBC222-J0X	CAP. M.P.E 0.0022UF 63V +/-5%	1	C604	
27-MBC222-J0X	CAP. M.P.E 0.0022UF 63V +/-5%	1	C654	
27-MBC333-J0X	CAP. M.P.E 0.033UF 63V +/-5%	1	C656	
27-MBC334-J0X	CAP. M.P.E 0.33UF 63V +/-5%	1	C608	
27-MBC334-J0X	CAP. M.P.E 0.33UF 63V +/-5%	1	C305	
27-MBC473-J0X	CAP. M.P.E 0.047 UF 63V +/-5%	1	C655	
27-MBC473-J0X	CAP. M.P.E 0.047 UF 63V +/-5%	1	C627	
27-MBC473-J0X	CAP. M.P.E 0.047 UF 63V +/-5%	1	C629	
27-MCC563-J0X	CAP M.P.E 0.056UF 100V +/-5%	1	C451	
27-PBC822-J0X	CAP. P.E 0.0082UF 63V +/-5%	1	C247	
34-A109K0-11X	COIL CHOKE 1 UH +/-10%	1	L102	
34-R100J2-OEX	COIL PL - 10 UH +/-5%	1	L002	
34-R100J2-OEX	COIL PL - 10 UH +/-5%	1	L208	
34-R220J2-OEX	COIL PL - 22 UH +/-5%	1	L206	
34-R220J2-OEX	COIL PL - 22 UH +/-5%	1	L202	
34-R270J2-OEX	COIL PL - 27 UH +/-5%	1	L207	
34-R470J2-OEX	COIL PL - 47 UH +/-5%	1	L101	
35-237250-00X	FERR. BEAD HF70 4.5X5.0	2		FOR D421
36-HDR001-AX1	TRANSFOR HOR. DRIVE (MAGNETIC CORE)	1	T401	

Item No.	Description	Quantity Req.	Designator	Remarks
41-WJ0150-B00	WI RE BARE JUMPER 15MM	1	L411	
41-WJ0055-B00	WI RE BARE JUMPER 5.5 MM	1	J915	
41-WJ0060-B00	WI RE BARE JUMPER 6mm	1	J018	
41-WJ0100-B00	WI RE BARE JUMPER 10MM	1	J022	
41-WJ0060-B00	WI RE BARE JUMPER 6mm	1	J218	
41-WJ0060-B00	WI RE BARE JUMPER 6mm	1	J229	
41-WJ0060-B00	WI RE BARE JUMPER 6mm	1	J624	
41-WJ0060-B00	WI RE BARE JUMPER 6mm	1	J307	
41-WJ0060-B00	WI RE BARE JUMPER 6mm	1	J924	
41-WJ0060-B00	WI RE BARE JUMPER 6mm	1	J909	
41-WJ0060-B00	WI RE BARE JUMPER 6mm	1	J910	
41-WJ0060-B00	WI RE BARE JUMPER 6mm	1	J911	
41-WJ0060-B00	WI RE BARE JUMPER 6mm	1	R001	
41-WJ0060-B00	WI RE BARE JUMPER 6mm	1	R002	
41-WJ0060-B00	WI RE BARE JUMPER 6mm	1	J014A	
41-WJ0060-B00	WI RE BARE JUMPER 6mm	1	J310	
41-WJ0060-B00	WI RE BARE JUMPER 6mm	1	J311	
41-WJ0060-B00	WI RE BARE JUMPER 6mm	1	J403	
41-WJ0060-B00	WI RE BARE JUMPER 6mm	1	J1111	
41-WJ0060-B00	WI RE BARE JUMPER 6mm	1	J1112	
41-WJ0065-B00	WI RE BARE JUMPER 6.5MM	1	J004	
41-WJ0065-B00	WI RE BARE JUMPER 6.5MM	1	J005	
41-WJ0065-B00	WI RE BARE JUMPER 6.5MM	1	J235	
41-WJ0065-B00	WI RE BARE JUMPER 6.5MM	1	J201	
41-WJ0065-B00	WI RE BARE JUMPER 6.5MM	1	J202	
41-WJ0065-B00	WI RE BARE JUMPER 6.5MM	1	J236	
41-WJ0065-B00	WI RE BARE JUMPER 6.5MM	1	J603	
41-WJ0065-B00	WI RE BARE JUMPER 6.5MM	1	J605	
41-WJ0065-B00	WI RE BARE JUMPER 6.5MM	1	J608A	
41-WJ0065-B00	WI RE BARE JUMPER 6.5MM	1	J625	
41-WJ0065-B00	WI RE BARE JUMPER 6.5MM	1	J627	

Item No.	Description	Quantity Req.	Designator	Remarks
41-WJ0065-B00	WI RE BARE JUMPER 6.5MM	1	J923	
41-WJ0065-B00	WI RE BARE JUMPER 6.5MM	1	J925	
41-WJ0065-B00	WI RE BARE JUMPER 6.5MM	1	J926	
41-WJ0070-B00	WI RE BARE JUMPER 7MM	1	J922	
41-WJ0070-B00	WI RE BARE JUMPER 7MM	1	J404	
41-WJ0075-B00	WI RE BARE JUMPER 7.5MM	1	D410	
41-WJ0075-B00	WI RE BARE JUMPER 7.5MM	1	J308	
41-WJ0075-B00	WI RE BARE JUMPER 7.5MM	1	J208	
41-WJ0065-B00	WI RE BARE JUMPER 6.5MM	1	J007	
41-WJ0075-B00	WI RE BARE JUMPER 7.5MM	1	J221	
41-WJ0075-B00	WI RE BARE JUMPER 7.5MM	1	J222	
41-WJ0065-B00	WI RE BARE JUMPER 6.5MM	1	J008	
41-WJ0075-B00	WI RE BARE JUMPER 7.5MM	1	J226	
41-WJ0075-B00	WI RE BARE JUMPER 7.5MM	1	J608	
41-WJ0075-B00	WI RE BARE JUMPER 7.5MM	1	J917	
41-WJ0075-B00	WI RE BARE JUMPER 7.5MM	1	J626	
41-WJ0080-B00	WI RE BARE JUMPER 8 MM	1	J013	
41-WJ0080-B00	WI RE BARE JUMPER 8 MM	1	J620	
41-WJ0085-B00	WI RE BARE JUMPER 8.5MM	1	J313	
41-WJ0085-B00	WI RE BARE JUMPER 8.5MM	1	J223	
41-WJ0065-B00	WI RE BARE JUMPER 6.5MM	1	J002	
41-WJ0085-B00	WI RE BARE JUMPER 8.5MM	1	J902	
41-WJ0085-B00	WI RE BARE JUMPER 8.5MM	1	J907	
41-WJ0085-B00	WI RE BARE JUMPER 8.5MM	1	J010	
41-WJ0085-B00	WI RE BARE JUMPER 8.5MM	1	J305	
41-WJ0075-B00	WI RE BARE JUMPER 7.5MM	1	J102	
41-WJ0095-B00	WI RE BARE JUMPER 9.5MM	1	J610	
41-WJ0100-B00	WI RE BARE JUMPER 10MM	1	J211	
41-WJ0100-B00	WI RE BARE JUMPER 10MM	1	J901	
41-WJ0100-B00	WI RE BARE JUMPER 10MM	1	J912	
41-WJ0100-B00	WI RE BARE JUMPER 10MM	1	J914	

Item No.	Description	Quantity Req.	Designator	Remarks
41-WJ0100-B00	WI RE BARE JUMPER 10MM	1	J916	
41-WJ0100-B00	WI RE BARE JUMPER 10MM	1	J921	
41-WJ0100-B00	WI RE BARE JUMPER 10MM	1	J602	
41-WJ0100-B00	WI RE BARE JUMPER 10MM	1	J618	
41-WJ0100-B00	WI RE BARE JUMPER 10MM	1	J619	
41-WJ0100-B00	WI RE BARE JUMPER 10MM	1	J931	
41-WJ0100-B00	WI RE BARE JUMPER 10MM	1	J932	
41-WJ0100-B00	WI RE BARE JUMPER 10MM	1	J312	
41-WJ0105-B00	WI RE BARE JUMPER 10.5MM	1	J230	
41-WJ0105-B00	WI RE BARE JUMPER 10.5MM	1	J027	
41-WJ0105-B00	WI RE BARE JUMPER 10.5MM	1	J1218	
41-WJ0110-B00	WI RE BARE JUMPER 11MM	1	J609	
41-WJ0110-B00	WI RE BARE JUMPER 11MM	1	J012	
41-WJ0110-B00	WI RE BARE JUMPER 11MM	1	J601	
41-WJ0110-B00	WI RE BARE JUMPER 11MM	1	J918	
41-WJ0110-B00	WI RE BARE JUMPER 11MM	1	J026	
41-WJ0120-B00	WI RE BARE JUMPER 12MM	1	J009	
41-WJ0120-B00	WI RE BARE JUMPER 12MM	1	J216	
41-WJ0120-B00	WI RE BARE JUMPER 12MM	1	J217	
41-WJ0120-B00	WI RE BARE JUMPER 12MM	1	J302	
41-WJ0125-B00	WI RE BARE JUMPER 12.5MM	1	J206	
41-WJ0125-B00	WI RE BARE JUMPER 12.5MM	1	J011	
41-WJ0125-B00	WI RE BARE JUMPER 12.5MM	1	J227	
41-WJ0125-B00	WI RE BARE JUMPER 12.5MM	1	J306	
41-WJ0125-B00	WI RE BARE JUMPER 12.5MM	1	J402	
41-WJ0125-B00	WI RE BARE JUMPER 12.5MM	1	J405	
41-WJ0125-B00	WI RE BARE JUMPER 12.5MM	1	J406	
41-WJ0125-B00	WI RE BARE JUMPER 12.5MM	1	J927	
41-WJ0125-B00	WI RE BARE JUMPER 12.5MM	1	J614A	
41-WJ0125-B00	WI RE BARE JUMPER 12.5MM	1	R308	
41-WJ0130-B00	WI RE BARE JUMPER 13MM	1	J220	

Item No.	Description	Quantity Req.	Designator	Remarks
41-WJ0130-B00	WI RE BARE JUMPER 13MM	1	J207	
41-WJ0130-B00	WI RE BARE JUMPER 13MM	1	J612	
41-WJ0135-B00	WI RE BARE JUMPER 13.5MM	1	J205	
41-WJ0135-B00	WI RE BARE JUMPER 13.5MM	1	J615	
41-WJ0140-B00	WI RE BARE JUMPER 14MM	1	J224	
41-WJ0145-B00	WI RE BARE JUMPER 14.5MM	1	J621	
41-WJ0145-B00	WI RE BARE JUMPER 14.5MM	1	J904	
41-WJ0150-B00	WI RE BARE JUMPER 15MM	1	J101	
41-WJ0150-B00	WI RE BARE JUMPER 15MM	1	J303	
41-WJ0150-B00	WI RE BARE JUMPER 15MM	1	J920	
41-WJ0150-B00	WI RE BARE JUMPER 15MM	1	L412	
41-WJ0150-B00	WI RE BARE JUMPER 15MM	1	R614	
41-WJ0150-B00	WI RE BARE JUMPER 15MM	1	J609A	
41-WJ0150-B00	WI RE BARE JUMPER 15MM	1	J304	
41-WJ0165-B00	WI RE BARE JUMPER 16.5MM	1	J225	
41-WJ0190-B00	WI RE BARE JUMPER 19MM	1	J023	
41-WJ0175-B00	WI RE BARE JUMPER 17.5MM	1	J105	
41-WJ0200-B00	WI RE BARE JUMPER 20MM	1	J024	
41-WJ0175-B00	WI RE BARE JUMPER 17.5MM	1	J212	
41-WJ0200-B00	WI RE BARE JUMPER 20MM	1	J025	
41-WJ0180-B00	WI RE BARE JUMPER 18MM	1	J213	
41-WJ0185-B00	WI RE BARE JUMPER 18.5MM	1	J228	
41-WJ0185-B00	WI RE BARE JUMPER 18.5MM	1	J028	
41-WJ0185-B00	WI RE BARE JUMPER 18.5MM	1	J210	
41-WJ0190-B00	WI RE BARE JUMPER 19MM	1	J908	
41-WJ0195-B00	WI RE BARE JUMPER 19.5MM	1	J017	
41-WJ0195-B00	WI RE BARE JUMPER 19.5MM	1	J215	
41-WJ0195-B00	WI RE BARE JUMPER 19.5MM	1	J209	
41-WJ0195-B00	WI RE BARE JUMPER 19.5MM	1	J214	
41-WJ0195-B00	WI RE BARE JUMPER 19.5MM	1	J021	
41-WJ0195-B00	WI RE BARE JUMPER 19.5MM	1	J1217	

Item No.	Description	Quantity Req.	Designator	Remarks
41-WJ0200-B00	WIRE BARE JUMPER 20MM	1	J016	
41-WJ0200-B00	WIRE BARE JUMPER 20MM	1	J905	
41-WJ0200-B00	WIRE BARE JUMPER 20MM	1	J913	
41-WJ0200-B00	WIRE BARE JUMPER 20MM	1	J604	
45-0SC8MO-0Y0	CRYSTAL 8.0MHZ	1	X001	
46-20598W-04X	PIN BASE *4 TJC1-4A	1		P411 FOR D.Y CONNECTOR
46-33079W-03X	PIN BASE *3 TJC3-3A	1		P002 P2 - P4 FOR W. BAL. ADJUST
46-33079W-04X	PIN BASE *4 TJC3-4A	1		P421 FOR CRT BD P502
46-33079W-05X	PIN BASE *5 TJC3-5A	1		P201 FOR CRT BD P503
46-33079W-05X	PIN BASE *5 TJC3-5A	1	P001	
62-227680-0UA	BRACKET ABS-KINGFA 606 (UO)	1		
64-P30080-104	M/C SCREW P 3 X 8	1		FOR IC301
64-P30080-104	M/C SCREW P 3 X 8	1		FOR Q411
64-P30080-104	M/C SCREW P 3 X 8	1		FOR Q414
64-P30100-104	M/C SCREW P 3 X 10	2		FOR IC602
65-Z30050-23M	NUT M 3	2		FOR IC301 & Q411
66-343730-0B0	HOLLOW RIVET 1.6X3.0XL3.2	3		FOR Q411
66-343730-0B0	HOLLOW RIVET 1.6X3.0XL3.2	10		FOR T402
67-H27292-1A0	HEAT SINK	1		FOR Q414
67-H30147-0A0	HEAT SINK FOR HORIZ (2501/2909	1		FOR Q411
41-WJ0180-B00	WIRE BARE JUMPER 18MM	1	J617A	
41-WJ0180-B00	WIRE BARE JUMPER 18MM	1	J616A	
26-EBP221-JCX	CAP. CER 220PF 50V +/-5% CH	1	C015	
26-EBP221-JCX	CAP. CER 220PF 50V +/-5% CH	1	C016	
41-WJ0100-B00	WIRE BARE JUMPER 10MM	1	J1230	
41-WJ0100-B00	WIRE BARE JUMPER 10MM	1	J1231	
41-WJ0100-B00	WIRE BARE JUMPER 10MM	1	J1232	
41-WJ0060-B00	WIRE BARE JUMPER 6mm	1	J410	
41-WJ0075-B00	WIRE BARE JUMPER 7.5MM	1	J014B	
41-WJ0070-B00	WIRE BARE JUMPER 7MM	1	J015B	
18-CB0221-JNX	RES. C.F. 220 OHM 1/6W +/-5%	1	R015	

Item No.	Description	Quantity Req.	Designator	Remarks
18-CB0221-JNX	RES. C.F. 220 OHM 1/6W +/-5%	1	R016	
41-WJ0075-B00	WIRE BARE JUMPER 7.5MM	1	J103	
10-CW574C-DJX	DIODE CW574CD	1	D101	
10-ORS4FS-FOX	DIODE RS4FS	1	D411	
66-343730-OB0	HOLLOW RIVET 1.6X3.0XL3.2	14		FOR C412, C414, C411, C413, C419, L414, L413
18-CB0223-JNX	RES. C.F. 22k OHM 1/6W +/-5%	1	R616	
57-10654X-00F	cable ties (2.5mmX95mm)	3		
41-WJ0050-B00	WIRE BARE JUMPER 5MM	1	J411	
67-H30179-7A0	HEAT SINK	1		FOR IC301
25-BDG222-M1X	CAP. ELEC 2200 UF 25V +/-20%	1	C435	
25-KJG101-M1X	CAP. ELEC 100 UF 160V +/-20%	1	C422	
34-R100J2-OEX	COIL PL - 10 UH +/-5%	1	L005	
26-A1M103-KBX	CAP. CER 0.01UF 500V +/-10% B	1	C401	
13-OAT24C-16P	IC EEPROM 16K AT24C16A (WRITE)	1	IC001	
18-CB0472-JNX	RES. C.F. 4.7k OHM 1/6W +/-5%	1	R025	
18-CB0472-JNX	RES. C.F. 4.7k OHM 1/6W +/-5%	1	R026	
18-CB0471-JNX	RES. C.F. 470 OHM 1/6W +/-5%	1	R024	
26-EBP330-JCX	CAP. CER 33PF 50V +/-5% CH	1	C314	
41-WJ0070-B00	WIRE BARE JUMPER 7MM	1	J919	
18-CB0229-JNX	RES. C.F. 2.2 OHM 1/6W +/-5%	1	R204	
26-EBP104-ZFX	CAP. CER 0.1UF 50V +80%/-20%	1	C230	
26-EBP104-ZFX	CAP. CER 0.1UF 50V +80%/-20%	1	C232	
26-EBP104-ZFX	CAP. CER 0.1UF 50V +80%/-20%	1	C236	
26-EBP103-ZFX	CAP. CER 0.01UF 50V +80%/-20% F	1	C613	
66-343740-OB0	HOLLOW RIVET (2.3mmx4.0mmx3.5mm)	2		FOR R404
66-343740-OB0	HOLLOW RIVET (2.3mmx4.0mmx3.5mm)	2		FOR D411
66-343740-OB0	HOLLOW RIVET (2.3mmx4.0mmx3.5mm)	2		FOR Q414
08-P44608-PWY		1		
10-1N4148-ABX	DIODE 1N4148 (SWITCHING)	1	D803	
10-1N4148-ABX	DIODE 1N4148 (SWITCHING)	1	D806	
10-1N4148-ABX	DIODE 1N4148 (SWITCHING)	1	D803A	

Item No.	Description	Quantity Req.	Designator	Remarks
10-1N4148-ABX	DIODE 1N4148 (SWITCHING)	1	D801	
10-1N4148-ABX	DIODE 1N4148 (SWITCHING)	1	D802	
10-55C33V-DBX	DIODE ZENER 33V 1/2W +/-5%	1	D804	
10-55C8V2-DBX	DIODE ZENER 8V2 1/2W +/-5%	1	D804A	
11-SA1015-YBX	TRANSISTOR 2SA1015Y	1	Q802	
11-SC1815-YBX	TRANSISTOR 2SC1815Y	1	Q805	
11-SC1815-YBX	TRANSISTOR 2SC1815Y	1	Q803	
11-SC1815-YBX	TRANSISTOR 2SC1815Y	1	Q804	
13-BT1376-00S	IC BT137-600	1	Q801	
13-C3042M-00B	IC MOC3042M	1	IC801	
18-CB0123-JNX	RES. C.F. 12k OHM 1/6W +/-5%	1	R809	
18-CB0152-JNX	RES. C.F. 1.5k OHM 1/6W +/-5%	1	R811	
18-CB0333-JNX	RES. C.F. 33K OHM 1/6W +/-5%	1	R806	
18-CB0333-JNX	RES. C.F. 33K OHM 1/6W +/-5%	1	R804	
18-CB0471-JNX	RES. C.F. 470 OHM 1/6W +/-5%	1	R808	
18-CB0471-JNX	RES. C.F. 470 OHM 1/6W +/-5%	1	R807	
18-CB0471-JNX	RES. C.F. 470 OHM 1/6W +/-5%	1	R802	
18-CB0512-JNX	RES. C.F. 5.1k OHM 1/6W +/-5%	1	R812	
18-FG0151-JHX	RES. M.O. 150 OHM 2W +/-5%	1	R801	
25-BFB100-M1X	CAP. ELEC 10 UF 50V +/-20%	1	C803	
25-BFB101-M1X	CAP. ELEC 100 UF 50V +/-20%	1	C802	
25-GCM221-M1X	CAP. ELEC 220UF 16V +/-20%	1	C805	
26-EBP102-KBX	CAP. CER 1000 PF 50V +/-10% B	1	C806	
26-EBP103-KBX	CAP. CER 0.01UF 50V +/-10%	1	C804	
27-AQT224-MVH	CAP. M.PP 0.22 UF 275VAC 20%	1	C801	
40-P44608-PWB1X	P.C.B POWER BD	1		
41-WJ0060-B00	WIRE BARE JUMPER 6mm	1	R810	
41-WJ0060-B00	WIRE BARE JUMPER 6mm	1	R805	
46-33079W-03X	PIN BASE *3 TJC3-3A	1	P802	
46-35184W-03X	PIN BASE *3 TJC1-3A	1	P801	
63-W30100-AB4	S/T SCREW W 3 X 10 AB	4		MTG PW BD

Item No.	Description	Quantity Req.	Designator	Remarks
18-CE0470-JNX	RES. C.F. 47 OHM 1/2W +/-5%	1	R803	
35-LB1005-01X	FERR BEAD H75 (3.5X1X5)	1	L802	
66-343730-0B0	HOLLOW RIVET 1.6X3.0XL3.2	2		FOR C801
36-TRF109-AX0	TRANSFORMER CONV. BCK-19-23	1	T801	
08-34504E-AVY	ASS'Y - SIDE AV BD	1		
40-B2294E-SIA	P.C.B. SIDE AV BD	1		
41-WJ0075-B00	WIRE BARE JUMPER 7.5MM	1	J1301	
41-WJ0075-B00	WIRE BARE JUMPER 7.5MM	1	J1302	
41-WJ0075-B00	WIRE BARE JUMPER 7.5MM	1	J1303	
41-WJ0100-B00	WIRE BARE JUMPER 10MM	1	J1304	
46-38636H-07X	HS 7P 620 TJC3-7Y/SCN-7Y	1		P1303 TO M.BD P921
47-RCA022-XX1	RCA SOCKET RCA-3316P1 Y/W/R	1	P1302	
47-SV1002-XX0	Y/C SOCKET VERTICAL TYPE	1	P1301	
62-2161SB-OHA	SIDE JACK PLATE	1		
63-W30100-AB4	S/T SCREW W 3 X 10 AB	2		
67-388190-0G0	STATOR (FOR S-AV PCB)	1		
08-HS3600-A113		1		
11-0BC337-0BX	TRANSISTOR (NPN) BC337-40	1	Q1501	
13-C73C03-02B	IC SC73C0302	1	IC1501	
14-IRE05B-XX0	IR EMITTING DIODE TSAL6200	1	D1501	
18-CB0229-JNX	RES. C.F. 2.2 OHM 1/6W +/-5%	1	R1502	
18-CB0221-JNX	RES. C.F. 220 OHM 1/6W +/-5%	1	R1501	
26-EBP101-JCX	CAP. CER 100PF 50V +/-5% CH	1	C1503	
26-EBP101-JCX	CAP. CER 100PF 50V +/-5% CH	1	C1504	
26-EBP104-ZFX	CAP. CER 0.1UF 50V +80%/-20%	1	C1501	
40-UOCASQ-RMA	P.C.B. REMOTE HANDSET BD	1		
45-COS455-KY1	CERAMIC RESONATOR 455KHZ	1	X1501	
49-HS3600-00X	RUBBER PAD KEYS	1		
55-HS36QB-OHA	LOWER CASE - REMOTE HANDSET	1		
55-HS36QD-OHA	BATT. DOOR - REMOTE HANDSET	1		
55-HS36QT-OHA	UPPER CASE - REMOTE HANDSET	1		

Item No.	Description	Quantity Req.	Designator	Remarks
67-X38064-OE2	BATTERY SPRING (+/-)	1		
67-X38065-OE2	BATTERY SPRING (+)	1		
67-X38066-OE2	BATTERY SPRING (-)	1		
74-007026-60C	POLYBAG (70mmX260mmX0.06mm)	1		
58-HS3600-5U1	INLAY REMOTE HANDSET	1		
56-399030-OHC	REMOTE HANDSET LENS	1		
08-34504E-FC1		1		
02-GND034-XX3	ASS"Y-CRT GND WIRE&HOUSE	1		
25-DFB479-M1X	CAP. ELEC 4.7 UF 50V +/-20% BP	2		FOR SP601A & SP602A
36-DEG340-XX0	DEGAUSSING COIL 3910MM	1		
41-TF0380-9CC	WIRE UL2468 #24 380MM RD WH	2		
42-81608F-BX0	SPEAKER 8W 8 OHM	1	SP601	
42-81608F-BX0	SPEAKER 8W 8 OHM	1	SP602	
42-G5008D-CX3	SPEAKER G50 8 OHM 5W	1	SP601A	
42-G5008D-CX3	SPEAKER G50 8 OHM 5W	1	SP602A	
44-340FLW-TS1A	CRT A80AEJ10X898	1		
46-14026H-02X	HS 2P 2468#22 570mm S11-2Y/7mm	1		P601H FOR M. BD P601
46-26514H-04X	HS 4P A/B 500/13 RBGW TJC1-4Y	1		P411H FOR DY COIL
46-27580H-02X	HS 2P22 600/7 TJC3-2Y	1		P602H FOR M. BD P602
48-LOC002-XX0	SW. DOOR LOCK PR5	1		
54-113970-0U0	PVC TUBE #5 L=ROLL	0.32		FOR SPK CONNECTORS
54-205140-000	SPACER CRT MOUNTING T=2MM	4		
54-295210-0V0	FIBER WASHER	1		FOR AC LINE CORD TO AC LINE CORD CLIP MTG
54-314740-0X0	CRT FIBRE SHEET (22mmX22mmX0.8mm)	8		MTG CRT & FRONT CABINET
54-345020-000	EVA SPONGE (3mmx8mmx80mm)	8		
54-345030-000	SPONGE (20X20X12)	2		
54-367330-000	SPONGE (2mmX14mmX335mm)	4		
55-3450FC-OCN	FRONT CABINET	1		
55-3450FD-OHA	PRESET DOOR	1		
56-3450LS-OHA	REMOTE LENS - T. RED STD	1		
56-3450PK-OHA	POWER KNOB	1		

Item No.	Description	Quantity Req.	Designator	Remarks
58-3450FI-OUI	INLAY FRONT CONTROL 3409	1		
62-3450SB-00D	SPEAKER BRACKET	2		
62-3462PK-OHA	POWER KNOB ADAPTE	1		
62-388060-OUA	POWER CORD NIP	1		
63-B30060-BT4	S/T SCREW B 3 X 6 BT	2		FOR FUNCTION PCB TO F. CAB
63-B30080-BT4	S/T SCREW B 3 X 8 BT	3		FOR FUNCTION PCB TO F. CAB
63-B40100-BT4	S/T SCREW B 4 X 10	8		8 FOR SPK MTG
63-B50200-AB4	S/T SCREW B 5 X 20 AB	4		FOR SPK. HOLDER MTG
63-B50200-AB4	S/T SCREW B 5 X 20 AB	20		FOR CRT MTG
63-W30080-AB4	S/T SCREW W 3 X 8 AB	1		FOR WASHER TO AC LINE CORD CLIP MTG
63-W30100-AB4	S/T SCREW W 3 X 10 AB	2		2FOR REMOTE CONTROL PCB TO F. CAB
63-W30120-AB4	S/T SCREW W 3 X 12 AB	2		2FOR POWER SWITCH MTG.
63-W30120-BT4	S/T SCREW W 3 X 12 BT	4		FOR TWEETER SPK
67-401680-OE0	SPACER CRT	4		
67-M39206-OE4	CRT MTG. WASHER	8		FOR CRT MTG
67-X21679-OE0	SPRING CRT 6mmX50mmX0.6mm	2		FOR CRT
63-B40300-AB2	S/T SCREW B 4 X 30 AB	3		FOR CAB.MTG. (BOTTOM)
57-10654X-00F	cable ties (2.5mmX95mm)	16		
57-29635X-00F	cable ties (4.8mmX160mm)	2		
54-113970-OU0	PVC TUBE #5 L=ROLL	0.16		FOR SPK HOUSING
67-X24970-OE0	SPRING	1		
62-216780-00D	PLATIC TAPE 12"	3		
58-2161SI-1UI	INLAY SIDE AV	1		
63-B40350-AB4	S/T SCREW B 4 X 35	3		FOR CAB.MTG. (BOTTOM)
08-34504E-RC1		1		
54-114000-00X	FELT TAPE (150mmX19mmX0.3mm)	20		FOR BACK CAB.AND OTHER PARTS
55-3450RC-OCN	REAR CABINET	1		
58-2506RI-FUI	INLAY REAR AV	1		
58-3450MP-OUI	PLATE MODEL NO.	1		
63-F30100-BT3	S/T SCREW F 3 X 10 BT (BLACK)	3		MTG RCA JACK & REAR CAB
63-B50300-BF4	S/T SCREW 5*30	11		FOR F. CAB&R. CAB MTG

Item No.	Description	Quantity Req.	Designator	Remarks
08-34504E-PA1	ASS'Y - PACKING PARTS	1		
49-382380-BAT	BATTERY 7# (R03P AAA SUM-4)	2		
74-022032-6WE	POLYBAG (23cmX34cmX0.06mm)	1		
75-3450LL-ECO	POLYFOAM (LL)	1		
75-3450LR-ECO	POLYFOAM (LR)	1		
75-3450UL-ECO	POLYFOAM (UL)	1		
75-3450UR-ECO	POLYFOAM (UR)	1		
76-003450-OAT	CARTON BOX	1		
74-160140-80HAA	POLYBAG	1		
72-34504E-E49	OPERATION MANUAL	1		
08-34504E-IRY	ASS'Y - IR BD	1		
40-3450MT-IRA	P.C.B. IR RECEIVE BD	1		
14-LED05R-XX1	LED RED FB205	1	D080	
62-388170-OHA	BRACKET	1		
62-3450LB-OHA	LED BRACKET	1		
11-SA1015-YBX	TRANSISTOR 2SA1015Y	1	Q081	
11-C124ES-OBX	TRANSISTOR PDTC124ES (NPN)	1	Q082	
18-CB0103-JNX	RES. C.F. 10K OHM 1/6W +/-5%	1	R091	
18-CB0102-JNX	RES. C.F. 1K OHM 1/6W +/-5%	1	R090	
18-CB0470-JNX	RES. C.F. 47 OHM 1/6W +/-5%	1	R089	
25-BCB470-M1X	CAP. ELEC 47 UF 16V +/-20%	1	C080	
46-35154H-05X	HS 5P 600 TJC3-5Y/SCN-5Y	1		P005 TO M. BD P001
02-IRR001-XX1	IR RECEIVER MODULE HRM380017	1	IR001	
08-03450E-SWY		1		
40-3450MT-SWA	P.C.B. SWITCH BD	1		
46-28559W-02X	PIN BASE *2 TJC1-2A	1	P801	
46-28559W-02X	PIN BASE *2 TJC1-2A	1	P801A	
46-AA035F-02F01	HS 2P 1617#22 350MM TJC1-2Y*2	1		FOR PWR SW. BD(P801A)&PWR PARTS
48-POW007-XX2	POWER SUPPLY SWITCH KDC-A04-B2	1	SW801	
51-JC0243-0PB01	POWER CORD	1		
64-B30050-104	M/C SCREW B 3 X 5	2		FOR POWER SWITCH TO 67-02167B-OE0

Item No.	Description	Quantity Req.	Designator	Remarks
67-02167B-OEO	POWER SWITCH BRACKET	1		FOR POWER SWITCH MTG
08-A1864E-SYY	ASS' -SYY BD	1		
11-SC1815-YBX	TRANSISTOR 2SC1815Y	1	Q204	
18-CB0121-JNX	RES. C.F. 120 OHM 1/6W +/-5%	1	R217	
18-CB0121-JNX	RES. C.F. 120 OHM 1/6W +/-5%	1	R218	
18-CB0271-JNX	RES. C.F. 270 OHM 1/6W +/-5%	1	R250	
34-R829J2-OEX	COIL PL - 8.2 UH +/-5%	1	L204	
40-3418ME-SYA	P.C.B. SYSTEM BD	1		
41-WJ0025-B00	WIRE BARE JUMPER 2.5mm	1		FOR Q205 (C - E)
41-WJ0060-B00	WIRE BARE JUMPER 6mm	1	J250	
45-TRA5M5-OYO	CER TRAP TPS 5.5MHZ	1	X203	
46-21550W-05X	HEADER *5 TS3B-SQ-1	1		S205 FOR M. BD P205
08-0B276E-YUY		1		
18-CB0101-JNX	RES. C.F. 100 OHM 1/6W +/-5%	1	R206	
18-CB0101-JNX	RES. C.F. 100 OHM 1/6W +/-5%	1	R207	
18-CB0820-JNX	RES. C.F. 82 OHM 1/6W +/-5%	1	R206A	
18-CB0820-JNX	RES. C.F. 82 OHM 1/6W +/-5%	1	R207A	
47-RCA089-XXO	RCA SOCKET AV-3.2-3LK-N2	1	P903	
41-WJ0075-B00	WIRE BARE JUMPER 7.5MM	1	J903	
08-00034E-PWN		1		
10-0001H8-FBX	DIODE 1H8 (FAST RECOVERY)	1	D851	
10-0FR104-FBX	DIODE FR104 (FAST RECTIFIER)	1	D832	
10-ORU4AM-FOX	DIODE RU4AM (FAST RECOVERY)	1	D831	
10-ORU4YX-FOX	DIODE RU4YX (FAST RECOVERY)	1	D833	
10-1N4148-ABX	DIODE 1N4148 (SWITCHING)	1	D807	
10-1N4148-ABX	DIODE 1N4148 (SWITCHING)	1	D808	
10-1N4148-ABX	DIODE 1N4148 (SWITCHING)	1	D826	
10-79C5V6-DBX	DIODE ZENER 5V6 1/2W 5%	1	D810	
10-79C8V2-DBX	DIODE ZENER 8V2 1/2W 5%	1	D825	
11-3DA882-YAX	TRANSISTOR 3DA882-Y NPN	1	Q803	
11-SC1815-YBX	TRANSISTOR 2SC1815Y	1	Q805	

Item No.	Description	Quantity Req.	Designator	Remarks
11-SC1815-YBX	TRANSISTOR 2SC1815Y	1	Q802	
11-SK3451-OCX	TRANSISTOR 2SK3451-01MR	1	Q801	
13-L7805C-VAP	IC L7805CV 1.5A (REGULATOR)	1	IC805	
13-DA1684-62P	IC TDA16846-2(Q67040-S4494)	1	IC801	
13-SFH615-A3P	PHOTO COUPLER SFH615A3	1	IC802	
18-CB0101-JNX	RES. C.F. 100 OHM 1/6W +/-5%	1	R838	
18-CB0102-JNX	RES. C.F. 1K OHM 1/6W +/-5%	1	R813	
18-CB0103-JNX	RES. C.F. 10K OHM 1/6W +/-5%	1	R807	
18-CB0103-JNX	RES. C.F. 10K OHM 1/6W +/-5%	1	R835	
18-CB0103-JNX	RES. C.F. 10K OHM 1/6W +/-5%	1	R837	
18-CB0123-JNX	RES. C.F. 12k OHM 1/6W +/-5%	1	R805	
18-CB0221-JNX	RES. C.F. 220 OHM 1/6W +/-5%	1	R809	
18-CB0222-JNX	RES. C.F. 2.2k OHM 1/6W +/-5%	1	R836	
18-CB0303-JNX	RES. C.F. 30K OHM 1/6W +/-5%	1	R808	
18-CB0332-JNX	RES. C.F. 3.3k OHM 1/6W +/-5%	1	R825	
18-CB0333-JNX	RES. C.F. 33K OHM 1/6W +/-5%	1	R806	
18-CB0683-JNX	RES. C.F. 68K OHM 1/6W +/-5%	1	R804	
18-CD0103-JNX	RES. C.F. 10K OHM 1/4W +/-5%	1	R822	
18-CD0362-JNX	RES. C.F. 3.6K OHM 1/4W +/-5%	1	R823	
18-CD0470-JNX	RES. C.F. 47 OHM 1/4W +/-5%	1	R810	
18-CE0823-JNX	RES. C.F. 82K OHM 1/2W +/-5%	1	R820	
18-DD0102-FNX	RES. M.F. 1K OHM 1/4W +/-1%	1	R811	
18-DD0102-FNX	RES. M.F. 1K OHM 1/4W +/-1%	1	R821	
18-DD0102-FNX	RES. M.F. 1K OHM 1/4W +/-1%	1	R833	
18-EG0479-JHX	RES. FUS. 4.7 OHM 2W +/-5%	1	R834	
18-EG0479-JHX	RES. FUS. 4.7 OHM 2W +/-5%	1	R834A	
18-FG0183-JHX	RES. M.O. 18K OHM 2W +/-5%	1	R842	
18-FG0330-JHX	RES. M.O. 33 OHM 2W +/-5%	1	R832	
18-FG0563-JHX	RES. M.O. 56K OHM 2W +/-5%	1	R851	
18-FH0153-JLX	RES. M.O. 15K OHM 3W +/-5%	1	R831	
18-KE0105-JN3	RES. H.VOLT. CC 1M OHM 1/2W +/-5%	1	R802	

Item No.	Description	Quantity Req.	Designator	Remarks
18-KE0105-JN3	RES. H. VOLT. CC 1M OHM 1/2W +/-5%	1	R803A	
18-KE0475-JNX	RES. H. VOLT. CC 4.7M OHM 1/2W	1	R803	
18-KF0825-JH3	RES. H. VOLT. CC 8.2M OHM 1W +/-5%	1	R812	
20-TR102H-5CX	TRIMMER B1K HORIZ TYPE	1	VR824	
22-NTC479-XX0	NTC 4.7 OHM +/-18% NTC4.7D2-14	1	RT802	
25-BCB100-M1X	CAP. ELEC 10 UF 16V +/-20%	1	C836A	
25-BCB101-M1X	CAP. ELEC 100 UF 16V +/-20%	1	C845A	
25-BCB221-M1X	CAP. ELEC 220 UF 16V +/-20%	1	C840	
25-BDA102-M1X	CAP. ELEC 1000 UF 25V +/-20%	1	C839	
25-BJG221-M1X	CAP. ELEC 220 UF 160V +/-20%	1	C835	
25-GCA222-M1X	CAP. ELEC 2200 UF 16V +/-20%	1	C838	
26-ABC104-ZFX	CAP. CER 0.1 UF 50V +80-20% F	1	C838A	
26-ABC104-ZFX	CAP. CER 0.1 UF 50V +80-20% F	1	C839A	
26-ABC104-ZFX	CAP. CER 0.1 UF 50V +80-20% F	1	C843	
26-ABC104-ZFX	CAP. CER 0.1 UF 50V +80-20% F	1	C846A	
26-ABC333-ZFX	CAP. CER 0.033UF 50V +80-20% F	1	C811	
26-ABC681-JZX	CAP. CER 680 PF 50V +/-5% SL	1	C815	
26-AIC221-KBX	CAP. CER 220 PF 500V +/-10% B	1	C832	
26-AIC221-KBX	CAP. CER 220 PF 500V +/-10% B	1	C833	
26-AIM103-KBX	CAP. CER 0.01UF 500V +/-10% B	1	C825A	
26-AMK221-JZX	CAP. CER 220pF 2KV +/-5% SL	1	C852	
26-AMK221-KZX	CAP. CER 220 PF 2KV +/-10% SL	1	C831	
26-AMK331-JZX	CAP. CER 330 pF 2KV +/-5% SL	1	C834	
26-AMK102-KBX	CAP. CER 1000 PF 2KV +/-10% B	1	C817	
26-APK222-ME4	CAP. CER 2200PF 400VAC +/-20% E	1	C817A	
26-APK471-KB4	CAP. CER 470 pF 400VAC +/-10%	1	C804	
26-APK471-KB4	CAP. CER 470 pF 400VAC +/-10%	1	C805	
26-AQK472-ZFX	CAP. CER 4700PF 250VAC+80-20%F	1	C804A	
26-AQK472-ZFX	CAP. CER 4700PF 250VAC+80-20%F	1	C805A	
26-EBP103-ZFX	CAP. CER 0.01UF 50V +80/-20% F	1	C812	
26-EBP103-ZFX	CAP. CER 0.01UF 50V +80/-20% F	1	C844	

Item No.	Description	Quantity Req.	Designator	Remarks
26-EBP331-JCX	CAP. CER 330PF 50V +/-5% CH	1	C813	
26-EBP560-JCX	CAP. CER 56PF 50V +/-5%	1	C814	
27-AQT224-MVH	CAP. M.PP 0.22 UF 275VAC 20%	1	C801	
27-MBC104-JOX	CAP. M.P.E 0.1 UF 63V +/-5%	1	C823	
27-MBC224-JOX	CAP. M.P.E 0.22UF 63V +/-5%	1	C821	
27-MBC224-JOX	CAP. M.P.E 0.22UF 63V +/-5%	1	C822	
27-MHM104-KOX	CAP. METAL P.E. 0.1UF 400V 10%	1	C803	
27-AQQ683-KOX	CAP. M.PP 0.068 UF 250VAC +/-10%	1	C851	
34-R101K2-1BX	COIL CHOKE 100 UH +/-10%	1	L824	
34-R220K2-1BX	COIL CHOKE 22 UH +/-10%	1	L825	
35-139730-00X	FERR. BEAD BF60	2		FOR L801
35-237250-00X	FERR. BEAD HF70 4.5X5.0	2		FOR D831
35-237250-00X	FERR. BEAD HF70 4.5X5.0	2		FOR D832
35-237250-00X	FERR. BEAD HF70 4.5X5.0	2		FOR D833
36-LIF001-XX0	LINE FILTER LCL1602	1	T802	
36-LIF003-XX0	LINE FILTER LCL-ET3502-TCL	1	T801	
41-WJ0060-B00	WIRE BARE JUMPER 6mm	1	J830	
41-WJ0065-B00	WIRE BARE JUMPER 6.5MM	1	J809	
41-WJ0065-B00	WIRE BARE JUMPER 6.5MM	1	J821	
41-WJ0065-B00	WIRE BARE JUMPER 6.5MM	1	J817	
41-WJ0075-B00	WIRE BARE JUMPER 7.5MM	1	J818	
41-WJ0085-B00	WIRE BARE JUMPER 8.5MM	1	J822	
41-WJ0125-B00	WIRE BARE JUMPER 12.5MM	1	J811	
41-WJ0125-B00	WIRE BARE JUMPER 12.5MM	1	J812	
41-WJ0125-B00	WIRE BARE JUMPER 12.5MM	1	J819	
41-WJ0135-B00	WIRE BARE JUMPER 13.5MM	1	J825	
41-WJ0135-B00	WIRE BARE JUMPER 13.5MM	1	J826	
41-WJ0135-B00	WIRE BARE JUMPER 13.5MM	1	J805	
41-WJ0145-B00	WIRE BARE JUMPER 14.5MM	1	J824	
41-WJ0150-B00	WIRE BARE JUMPER 15MM	1	J807	
41-WJ0150-B00	WIRE BARE JUMPER 15MM	1	J813	

Item No.	Description	Quantity Req.	Designator	Remarks
41-WJ0150-B00	WIRE BARE JUMPER 15MM	1	J820	
41-WJ0150-B00	WIRE BARE JUMPER 15MM	1	L801	
41-WJ0180-B00	WIRE BARE JUMPER 18MM	1	J806	
41-WJ0185-B00	WIRE BARE JUMPER 18.5MM	1	J808	
41-WJ0185-B00	WIRE BARE JUMPER 18.5MM	1	J815	
41-WJ0195-B00	WIRE BARE JUMPER 19.5MM	1	J810	
46-10962W-02X	PIN BASE *2 TJC2-2A	1		P803 FOR DEGAUSSING COIL
64-P30060-104	M/C SCREW 3 X 6 (ZINC)	1		FOR Q803
64-P30080-104	M/C SCREW P 3 X 8	1		FOR Q801
64-P30080-104	M/C SCREW P 3 X 8	1		FOR IC805
66-20516X-0B0	FUSE HOLDER	2		FOR F801
66-343730-0B0	HOLLOW RIVET 1.6X3.0XL3.2	2		FOR C835
66-343730-0B0	HOLLOW RIVET 1.6X3.0XL3.2	6		FOR T803
66-343730-0B0	HOLLOW RIVET 1.6X3.0XL3.2	2		FOR C801
66-343730-0B0	HOLLOW RIVET 1.6X3.0XL3.2	4		FOR DB801
66-343730-0B0	HOLLOW RIVET 1.6X3.0XL3.2	4		FOR T802
66-343730-0B0	HOLLOW RIVET 1.6X3.0XL3.2	2		FOR D832
66-343730-0B0	HOLLOW RIVET 1.6X3.0XL3.2	3		FOR RT801
66-343730-0B0	HOLLOW RIVET 1.6X3.0XL3.2	2		FOR C839
67-H24249-1M2	HEAT SINK	1		FOR Q803
67-H27292-3A0	HEAT SINK	1		FOR IC805
67-H35984-2A0	HEAT SINK	1		FOR Q801
71-DYP000-WX1	LABEL	1		STICK ON HEAT SINK
26-AIM103-KBX	CAP. CER 0.01UF 500V +/-10% B	1	C807A	
66-343730-0B0	HOLLOW RIVET 1.6X3.0XL3.2	3		FOR T801
26-ABC821-KBX	CAP. CER 820 PF 50V +/-10% B	1	C810	
10-RS405M-H7X	DIODE ZENER RS405M (4.0A/600V)	1	DB801	
66-343740-0B0	HOLLOW RIVET (2.3mmx4.0mmx3.5mm)	2		FOR C806
66-343740-0B0	HOLLOW RIVET (2.3mmx4.0mmx3.5mm)	2		FOR P803
66-343740-0B0	HOLLOW RIVET (2.3mmx4.0mmx3.5mm)	2		FOR D831
66-343740-0B0	HOLLOW RIVET (2.3mmx4.0mmx3.5mm)	2		FOR D833

Item No.	Description	Quantity Req.	Designator	Remarks
66-343740-OB0	HOLLOW RIVET (2.3mmx4.0mmx3.5mm)	2		FOR IC805
36-TRF127-AX2	TRANSFORMER CONV. BCK-4922	1	T803	
18-CD0470-JNX	RES. C.F. 47 OHM 1/4W +/-5%	1	R808A	
25-BDB101-M1X	CAP. ELEC 100 UF 25V +/-20%	1	C816	
08-34504E-OT2	ASS'Y -OTHER PARTS OF MAIN BD	1		
07-389F15-NB1	TUNER	1	TU101	
13-A25V01-TOP	IC TCL-A25V01-TO	1	IC101	
13-TDA894-4JS	IC TDA8944J	1	IC602	
18-CB0103-JNX	RES. C.F. 10K OHM 1/6W +/-5%	1	R045	
18-CB0103-JNX	RES. C.F. 10K OHM 1/6W +/-5%	1	R009	
18-CB0103-JNX	RES. C.F. 10K OHM 1/6W +/-5%	1	R037	
18-CB0123-JNX	RES. C.F. 12K OHM 1/6W +/-5%	1	R413	
18-CB0102-JNX	RES. C.F. 1K OHM 1/6W +/-5%	1	R237	
18-CB0471-JNX	RES. C.F. 470 OHM 1/6W +/-5%	1	R044	
18-CB0472-JNX	RES. C.F. 4.7k OHM 1/6W +/-5%	1	R602	
18-CB0472-JNX	RES. C.F. 4.7k OHM 1/6W +/-5%	1	R612	
18-CB0472-JNX	RES. C.F. 4.7k OHM 1/6W +/-5%	1	R417A	
18-CB0563-JNX	RES. C.F. 56K OHM 1/6W +/-5%	1	R414	
18-CB0753-JNX	RES. C.F. 75K OHM 1/6W +/-5%	1	C211	
18-CB0820-JNX	RES. C.F. 82 OHM 1/6W +/-5%	1	R901	
18-CB0912-JNX	RES. C.F. 9.1K OHM 1/6W +/-5%	1	R416	
18-CB0912-JNX	RES. C.F. 9.1K OHM 1/6W +/-5%	1	R432	
18-EG0109-JHX	RES. FUS. 1 OHM 2W +/-5%	1	R461	
18-EG0109-JHX	RES. FUS. 1 OHM 2W +/-5%	1	R431	
18-FF0159-JGX	RES. M.O. 1.5 OHM 1W +/-5%	1	R304	
18-FF0181-JGX	RES. M.O. 180 OHM 1W +/-5%	1	R309	
18-FG0129-JHX	RES. M.O. 1.2 OHM 2W +/-5%	1	R313	
25-BCB221-M1X	CAP. ELEC 220 UF 16V +/-20%	1	C245	
25-BCB221-M1X	CAP. ELEC 220 UF 16V +/-20%	1	C210	
25-BMJ221-M1X	CAP. ELEC 220 UF 400V +/-20%	1	C806	
26-EBP103-ZFX	CAP. CER 0.01UF 50V +80/-20% F	1	C001	

Item No.	Description	Quantity Req.	Designator	Remarks
27-AGQ474-JSX	CAP. M. PP 0.47UF 250V +/-5%	1	C419	
27-ALQ472-JOX	CAP. M. PP 4700PF 1.6KV +/-5%	1	C411	
27-ALQ602-JOX	CAP. M. PP 6000 PF 1.6KV +/-5%	1	C414	
27-ALR962-JOX	CAP. M. PP 9600pF 1.6KV +/-5%	1	C412	
27-MBC472-JOX	CAP. M. P. E. 0.0047UF 63V +/-5%	1	C645	
27-MBC472-JOX	CAP. M. P. E. 0.0047UF 63V +/-5%	1	C646	
27-MBC224-JOX	CAP. M. P. E 0.22UF 63V +/-5%	1	C309	
27-MCC102-JOX	CAP. M. P. E 1000PF 100V +/-5%	1	C311	
27-RHQ223-JOX	CAP. PP 0.022 UF 400V +/-5%	1	C413	
36-WID601-XX1	COIL CHOKE 600 UH	1	L413	
37-SC2901-5100X	FBT BSC29-0151Q	1	T402	
41-WJ0060-B00	WIRE BARE JUMPER 6mm	1	JP901	
41-WJ0060-B00	WIRE BARE JUMPER 6mm	1	JP902	
41-WJ0060-B00	WIRE BARE JUMPER 6mm	1	JP904	
41-WJ0060-B00	WIRE BARE JUMPER 6mm	1	J315	
41-WJ0075-B00	WIRE BARE JUMPER 7.5MM	1	D209	
41-WJ0135-B00	WIRE BARE JUMPER 13.5MM	1	J204A	
46-28559W-02X	PIN BASE *2 TJC1-2A	1	P801	
46-33079W-07X	PIN BASE *7 TJC3-7A	1		P921 FOR FRONT AV BD
47-RCA023-XX1	RCA JACK 3PV YEL WHI RED/SW	1	P904	
47-RCA023-XX1	RCA JACK 3PV YEL WHI RED/SW	1	P906	
50-03150D-1GS1	FUSE 3.15AT 250VAC 5mmX20mm	1	F801	
62-B229MB-OUN	MAIN BD BRACKET	1		
63-W30100-AB4	S/T SCREW W 3 X 10 AB	8		MTG M. BD & M. BD BKT
67-H34423-4A0	HEAT SINK	1		FOR IC602
70-271510-00A	SERVICE CARD	1		FOR PRODUCTION USE
71-270870-0A9	LABEL	2		
90-209770-SR1	SILICONE GREASE G-746	0.0015		FOR Q411, Q414, IC602, IC301, Q801
90-269080-ZU0	CLEAN COATING TC-131L 14KG/BARREL	0.0001		
45-SAW395-3MO	SAW FILTER K3953M(PIF 38.9MHZ)	1	Z101	
18-CB0223-JNX	RES. C.F. 22k OHM 1/6W +/-5%	1	R631	

Item No.	Description	Quantity Req.	Designator	Remarks
18-CB0223-JNX	RES. C.F. 22k OHM 1/6W +/-5%	1	R633	
63-B30100-BT4	S/T SCREW B 3 X 10 BT	2		MTG M. BD&FBT
54-128700-0X0	FIBRE WASHER 3.3 X 10 X 0.8	2		MTG M. BD&FBT
46-12866W-02X	PIN BASE *2 S11-02Y	1	P601	
46-33079W-02X	PIN BASE *2 TJC3-2A	1	P602	
18-RF0109-JGX	RES. WIRE ROUND 1 OHM 1W +/-5%	1	R433	
36-LIN150-XX1	COIL LINEARITY 15 UH	1	L414	
10-1N4148-ABX	DIODE 1N4148 (SWITCHING)	1	D601	
18-CB0203-JNX	RES. C.F. 20k OHM 1/6W +/-5%	1	R619	
26-ABC100-JCX	CAP. CER 10 PF 50V +/-5% NPO	1	C052	
26-ABC360-JCX	CAP. CER 36 PF 50V +/-5% NPO	1	C054	
10-1N4148-ABX	DIODE 1N4148 (SWITCHING)	1	D604	
26-EBP331-JCX	CAP. CER 330PF 50V +/-5% CH	1	C035	
22-PTC200-XX0	POSISTOR 20 OHM (25-34)	1	RT801	
40-3418ME-MAI1X	P.C.B. MAIN PCB BD	1		
10-1N4148-ABX	DIODE 1N4148 (SWITCHING)	1	D604A	
41-WJ0050-B00	WIRE BARE JUMPER 5MM	1	JP1201	
41-WJ0195-B00	WIRE BARE JUMPER 19.5MM	1	JP1202	
41-WJ0075-B00	WIRE BARE JUMPER 7.5MM	1	J401	
46-35184W-03X	PIN BASE *3 TJC1-3A	1	P802	
46-AA015T-03F	HS 3P 1617#22 150MM TJC1-3Y*2	1		FOR P802 TO ENERGY BD P801
46-32537H-03X	HS 3P24 400MM TJC3-3Y/SCN-3Y	1		P004 TO ENERGY BD P802
10-1N4148-ABX	DIODE 1N4148 (SWITCHING)	1	J613	
46-10967W-01X	PIN BASE *1 TJC1-1A	1		G1 FOR GND WIRE
18-CB0472-JNX	RES. C.F. 4.7k OHM 1/6W +/-5%	1	R005	
18-CB0472-JNX	RES. C.F. 4.7k OHM 1/6W +/-5%	1	R006	
26-EBP181-JCX	CAP. CER 180PF 50V +/-5% CH	1	C008	
41-WJ0150-B00	WIRE BARE JUMPER 15MM	1	J227A	
66-343740-0B0	HOLLOW RIVET (2.3mmx4.0mmx3.5mm)	2		FOR IC602
46-33079W-02X	PIN BASE *2 TJC3-2A	1		P005A FOR F. CTL BD P001
46-33079W-02X	PIN BASE *2 TJC3-2A	1		P101 FOR NICM PARTS P1101

Item No.	Description	Quantity Req.	Designator	Remarks
08-03418E-NIY	ASS'Y- NICAM BD	1		
11-SC388A-MBX	TRANSISTOR 2SC388ATM (RF AMPL)	1	Q1101	
13-TDA980-1AP	IC TDA9801A	1	IC1101	
13-TDA987-4AP	IC TDA9874APS	1	IC1102	
18-CB0100-JNX	RES. C.F. 10 OHM 1/6W +/-5%	1	R1111	
18-CB0100-JNX	RES. C.F. 10 OHM 1/6W +/-5%	1	R1109	
18-CB0101-JNX	RES. C.F. 100 OHM 1/6W +/-5%	1	R1114	
18-CB0101-JNX	RES. C.F. 100 OHM 1/6W +/-5%	1	R1115	
18-CB0102-JNX	RES. C.F. 1K OHM 1/6W +/-5%	1	R1106	
18-CB0123-JNX	RES. C.F. 12k OHM 1/6W +/-5%	1	R1104	
18-CB0223-JNX	RES. C.F. 22k OHM 1/6W +/-5%	1	R1107	
18-CB0223-JNX	RES. C.F. 22k OHM 1/6W +/-5%	1	R1108	
18-CB0331-JNX	RES. C.F. 330 OHM 1/6W +/-5%	1	R1103	
18-CB0331-JNX	RES. C.F. 330 OHM 1/6W +/-5%	1	R1112	
18-CB0339-JNX	RES. C.F. 3.3 OHM 1/6W +/-5%	1	R1110	
18-CB0391-JNX	RES. C.F. 390 OHM 1/6W +/-5%	1	R1105	
18-CB0393-JNX	RES. C.F. 39K OHM 1/6W +/-5%	1	R1101	
18-CB0563-JNX	RES. C.F. 56K OHM 1/6W +/-5%	1	R1102	
18-CB0822-JNX	RES. C.F. 8.2K OHM 1/6W +/-5%	1	R1113	
25-BCB220-M1X	CAP. ELEC 22 UF 16V +/-20%	1	C1105	
25-BCB470-M1X	CAP. ELEC 47 UF 16V +/-20%	1	C1111	
25-BCB471-M1X	CAP. ELEC 470 UF 16V +/-20%	1	C1103	
25-BFB109-M1X	CAP. ELEC 1 UF 50V +/-20%	1	C1121	
26-EBP102-KBX	CAP. CER 1000 PF 50V +/-10% B	1	C1101	
26-EBP102-KBX	CAP. CER 1000 PF 50V +/-10% B	1	C1107	
26-EBP102-KBX	CAP. CER 1000 PF 50V +/-10% B	1	C1122	
26-EBP102-KBX	CAP. CER 1000 PF 50V +/-10% B	1	C1124	
26-EBP103-ZFX	CAP. CER 0.01UF 50V +80/-20% F	1	C1112	
26-EBP103-ZFX	CAP. CER 0.01UF 50V +80/-20% F	1	C1113	
26-EBP103-ZFX	CAP. CER 0.01UF 50V +80/-20% F	1	C1115	
26-EBP680-JZX	CAP. CER 68PF 50V +/-5% SL TUBE	1	C1108	

Item No.	Description	Quantity Req.	Designator	Remarks
27-MBC104-J0X	CAP. M.P.E 0.1 UF 63V +/-5%	1	C1102	
27-MBC104-J0X	CAP. M.P.E 0.1 UF 63V +/-5%	1	C1123	
27-MBC104-J0X	CAP. M.P.E 0.1 UF 63V +/-5%	1	C1106	
34-A100K0-11X	COIL CHOKE 10UH +/-10%	1	L1101	
35-139730-00X	FERR. BEAD BF60	2		FOR L1102 & L1103
38-309820-00X	COIL I.F.T FOR VCO 76 MHZ	1	T1101	
41-WJ0060-B00	WIRE BARE JUMPER 6mm	1	J1105	
41-WJ0060-B00	WIRE BARE JUMPER 6mm	1	J1110	
41-WJ0060-B00	WIRE BARE JUMPER 6mm	1	J1109	
41-WJ0085-B00	WIRE BARE JUMPER 8.5MM	1	J1103	
41-WJ0085-B00	WIRE BARE JUMPER 8.5MM	1	J1104	
41-WJ0085-B00	WIRE BARE JUMPER 8.5MM	1	J1108	
41-WJ0085-B00	WIRE BARE JUMPER 8.5MM	1	J1101	
41-WJ0085-B00	WIRE BARE JUMPER 8.5MM	1	J1102	
41-WJ0100-B00	WIRE BARE JUMPER 10MM	1	L1102	
41-WJ0100-B00	WIRE BARE JUMPER 10MM	1	L1103	
41-WJ0150-B00	WIRE BARE JUMPER 15MM	1	J1106	
41-WJ0150-B00	WIRE BARE JUMPER 15MM	1	J1107	
45-OSC24M-5N0	CRYSTAL 24.576 MHZ	1	X1101	
45-SAW926-0M0	SAW FILTER K9260M (SIF 33.4)	1	Z1101	
46-30215H-02X	HS 1365#26 200MM TJC3-2Y/SCN-2	1		P1101 FOR M.BD P101
26-EBP103-ZFX	CAP. CER 0.01UF 50V +80/-20% F	1	C1104	
26-EBP103-ZFX	CAP. CER 0.01UF 50V +80/-20% F	1	C1117	
26-EBP103-ZFX	CAP. CER 0.01UF 50V +80/-20% F	1	C1118	
26-EBP103-ZFX	CAP. CER 0.01UF 50V +80/-20% F	1	C1119	
26-EBP103-ZFX	CAP. CER 0.01UF 50V +80/-20% F	1	C1120	
26-EBP103-ZFX	CAP. CER 0.01UF 50V +80/-20% F	1	C1125	
26-EBP104-ZFX	CAP. CER 0.1UF 50V +80%/-20%	1	C1126	

TCL M113B chassis alignment instruction

Enter factory mode in production line

Simply press the D-mode key on the factory remote handset.

Enter service mode

Press and hold the VOLUME DOWN key tightly on the unit until minimum level and don't release the VOLUMN DOWN key, then press the DISPLAY key on the remote handset.

"D" letter on the screen indicated that the factory mode was entered. Now you can use the shortcut key to access the factory menu. All change in factory data will save in EEPROM automatically

Note:

1. You can disable the D-Mode key (on factory remote handset) by change "BIT-0" of "OPT" to "0". If the D-Mode key was disabled, you can't enter D-Mode by the D-mode key on the factory remote (but you can still enter service mode). It is suggested to disable the D-Mode key before the set leave the factory.
2. On the factory remote handset, you can find the "I²C" key. It can cut off the I²C control from the CPU to other IC. This is only useful when automatic adjustment of white balance.
3. All system data in menu of "key 6" must keep unchanged when servicing. Otherwise, the set may not work properly.

Setting method:

No	Adjustment Items	Data Name (default value inside blanket)	Conditions and input signal	Setting method (need enter D-mode)
1	Screen voltage	-----	"IRGB cut off" must set to 80 (all pattern)	<ul style="list-style-type: none"> ● Press "MUTE" key on the remote handset and the screen will become a horizontal line. Then adjust the "screen" VR on the flyback until the horizontal line can just be seen (minimum visible intensity).
2	Focus voltage	-----	Cross hatch pattern.	<ul style="list-style-type: none"> ● Adjust the "focus" VR on the flyback until the screen becomes clear.
3	Vertical geometry for PAL system (Key 1)	HIT(11) VP50(04) VLIN(0B) VSC(09) VBLK(00) VCEN(1B) OSDH(1F) DPC43(00) DPC169(00)	Input a PAL cross hatch pattern.	<ul style="list-style-type: none"> ● Adjust HIT for vertical amplitude. ● Adjust VP50 for vertical position. ● Adjust VLIN for vertical linearity. ● Adjust VSC for vertical S-correction ● (Normally use default value) ● Adjust VCEN for vertical position ● Adjust OSDH for OSD position ● Same as DPC, adjust it on EXPAND 4:3 mode and 16:9 mode

4	Vertical geometry for NTSC system (Key 1)	HITS(11) VP60(02) VLIS(0A) VSS(08) VBLK(00) VCEN(1C) OSDHS(1D) DPC43S(00) DPC169S(00)	Input a NTSC cross hatch pattern.	<ul style="list-style-type: none"> ● Adjust HITS for vertical amplitude. ● Adjust VP60 for vertical position. ● Adjust VLINS for vertical linearity. ● Adjust VSS for vertical S-correction (normally use default value) ● Adjust VCEN for vertical position. ● Adjust OSDHS for OSD position ● Same as DPC, adjust it on EXPAND 4:3 mode and 16:9 mode.
5	Horizontal geometry for PAL system (Key 2)	HPOS(0C) DPC(23) KEY(20) WID(22) ECCT(09) ECCB(0A) VEHT(04) HEHT(04)	Input a PAL cross hatch pattern with black and white background.	<ul style="list-style-type: none"> ● Adjust HPOS for horizontal position. ● Adjust DPC, KEY, ECCT and ECCB until the vertical line at left and right side of the picture become straight. ● Adjust WID for horizontal width. ● VEHT and HENT is for the picture size stability when changing the brightness of the screen. Receive pattern of cross hatch with black background and then change to white background, then compare the vertical and horizontal size between black and white background. Adjust VEHT and HEHT until you get the minimum difference of screen size. After you adjust VEHT and HEHT, you must re-adjust vertical and horizontal amplitude.
6	Horizontal geometry for NTSC system (Key 2)	HPS (10) DPCS(1F) KEYS(1F) WIDS(22) ECCTS(0E) ECCBS(10) VEHTS(04) HEHTS(04)	Input a NTSC cross hatch pattern with black and white background.	<ul style="list-style-type: none"> ● Adjust HPS for horizontal position. ● Adjust DPCS, KEYS, ECCTS and ECCBS until the vertical line at left and right side of the picture become straight. ● Adjust WIDS for horizontal width. ● Adjust VEHTS and HEHTS using same method of PAL system. Also need re-adjustment of vertical and horizontal amplitude.
7	Key 3 (Status adjustment)	CNTX (5A) CNTN (07) BRTX (20) BRTN (1D) COLX (3F) COLN (00) TNTX (42) TNTN (28)	-----	<ul style="list-style-type: none"> ● (all use default value)
8	Key 4 (Status adjustment)	BRTC (30) COLC (57) COLS (47) COLP (F0) SCOL(04) SCNT (0F) CNTC (40) TNTC (48)	-----	<ul style="list-style-type: none"> ● (all use default value)

9	Key 5 (sharpness adjustment)	ST3 (20) SV3 (20) ST4 (20) SV4 (20) SVD(15) ASSH(04) SHPX (3F) SHPN (1A)	-----	● (all use default value)
10	Key 7 (Status adjustment)	RFAGC (1A) SBY (08) SRY (08) BRTS (0D) TXXC (1F) RGCN (00) SECD(08) MUTT(20) STAT(60)	Receive a 60dB grey scale + color bar signal	<ul style="list-style-type: none"> ● Adjust RFAGC until the picture noises disappear exactly. ● Adjust SBY and SRY to get the optimal color for SECAM system. ● For the adjustment of BRTS, receive an 8 step grey scale pattern and adjust all picture settings to 50%. Then adjust BRTS until the first and second step on the screen can just be distinguished. ● (the other use default value)
11	Key 8 (curve of volume control, curve of B.E./WOOFER)	V01(3A) V25(B0) V50(DC) V100(FF) BASC(40) BASX(72) TREC(40) WOFC(39) AVC(0E)	-----	● (all use default value)
12	Key 9 (curve of B.E./WOOFER)	NEWS(14) SPACES(5A) NEWT(14) SPACET(5A) WOFF(00) B01(4F) B25(68) B50(7F)	-----	● (all use default value)
13	Key calendar (other adjustment)	SVM(07) SVM1(07) SVM2(06) SVM3(07) PYNX(28) PYNN(15) PYXS(22) PYNS(04)	-----	● (all use default value)
14	Key note (other adjustment)	CLTO(4B) CLTM(4C) CLVO(4D) CLVD(48) ABL(A7) DCBS(33) DEF(01) COM1(84)	-----	● (all use default value)

15	Key game (other adjustment)	OSD1(2B) OSDF1(63) OSD2(1C) OSDF2(63) HAFC(09) NOIS(01) UCOM(00)	-----	● (all use default value)
16	Key 0 (White balance adjustment)	R CUT (80) G CUT (80) B CUT (80) G DRV (40) B DRV (40)	Black and white pattern (PAL)	<ol style="list-style-type: none"> 1. Measure the dark side of the picture with a color analyzer and set RCUT to 80. Then adjust BCUT and GCUT until the data on the analyzer become x = 284, y = 299. 2. Measure the bright side of the picture, Then adjust BDRV and GDRV until the data on the analyzer become x = 284, y = 299. 3. Repeat step 1 and 2 until you get right color on both dark and bright side of the screen.

System data:

Item	Adjust item	Default value
Key6	OPT	36
	FLG0	0E
	FLG1	2C
	STBY	12
	HD-DELAY	0C
	MODE0	63
	MODE1	51
	MODE2	08

FACTORY-OUT SETUP : In D-MODE, press **RECALL** button to initialize to the FACTORY-OUT status.

AGING MODE: In D-MODE, press **OK** button to entry AGING MODE.

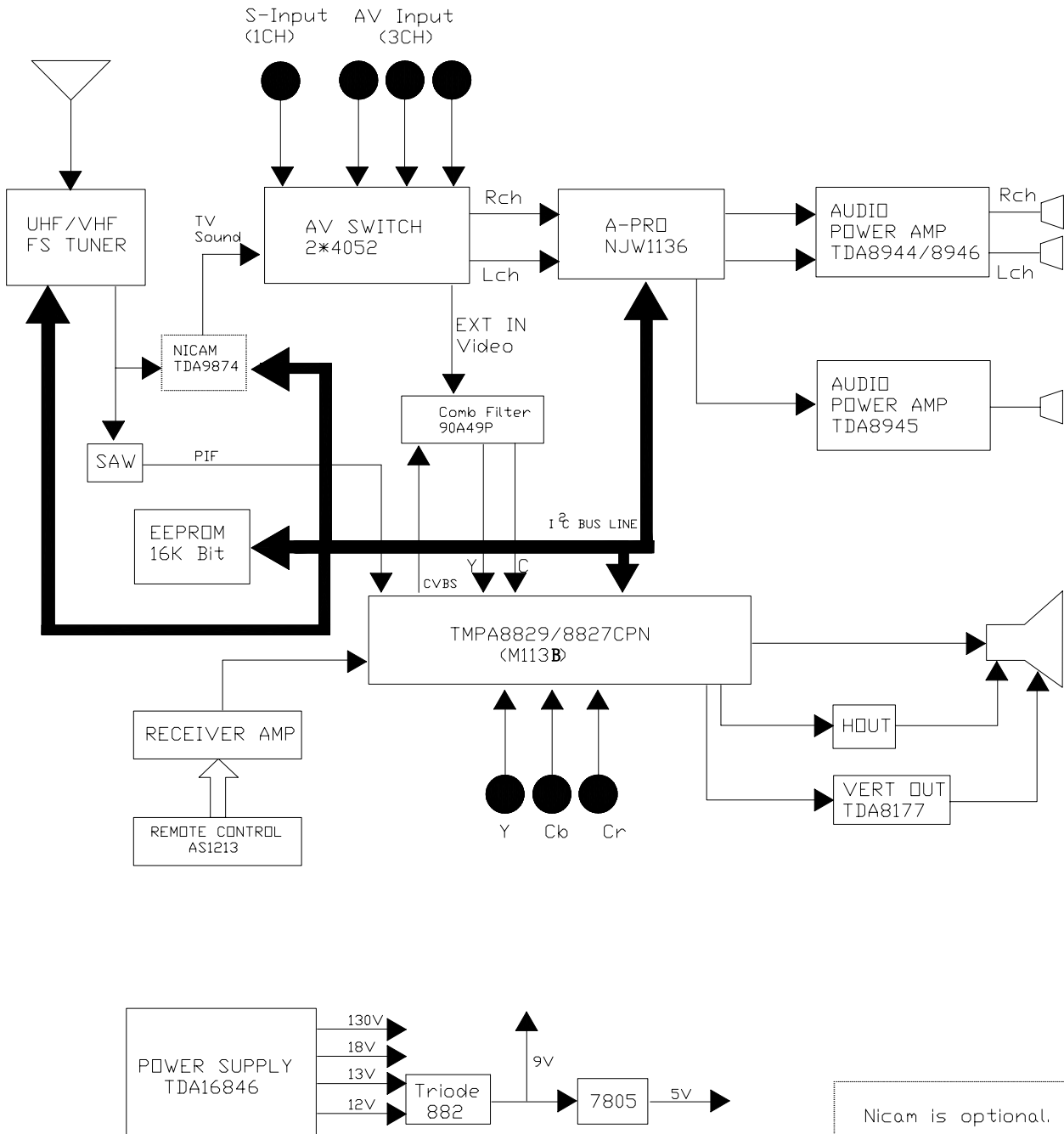
EEPROM INITIALZATION: In D-MODE, press “**0752**” to initialize EEPROM.

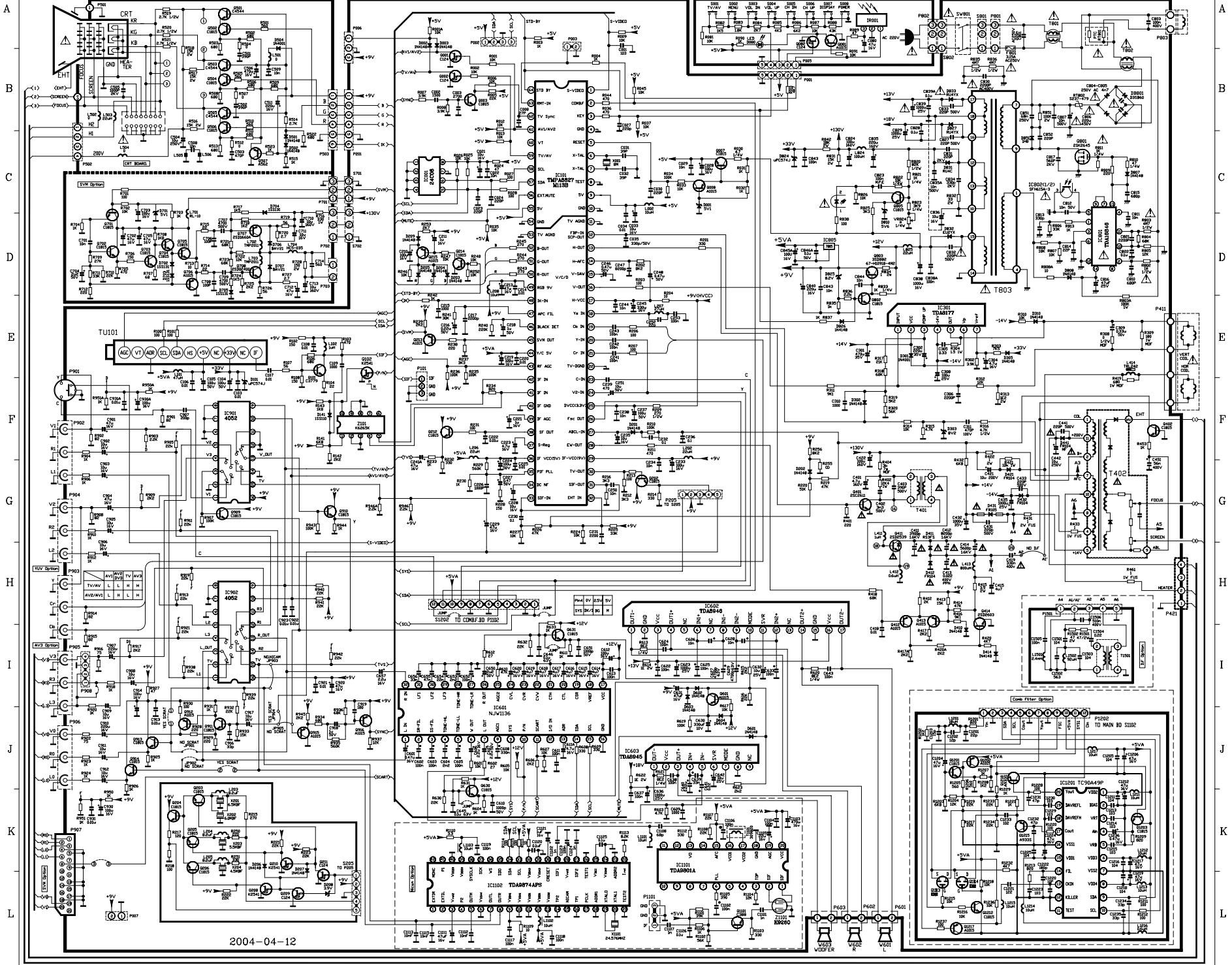
NOTICE: Before to be released, any M113B chassis must be initialized to the FACTORY-OUT status.

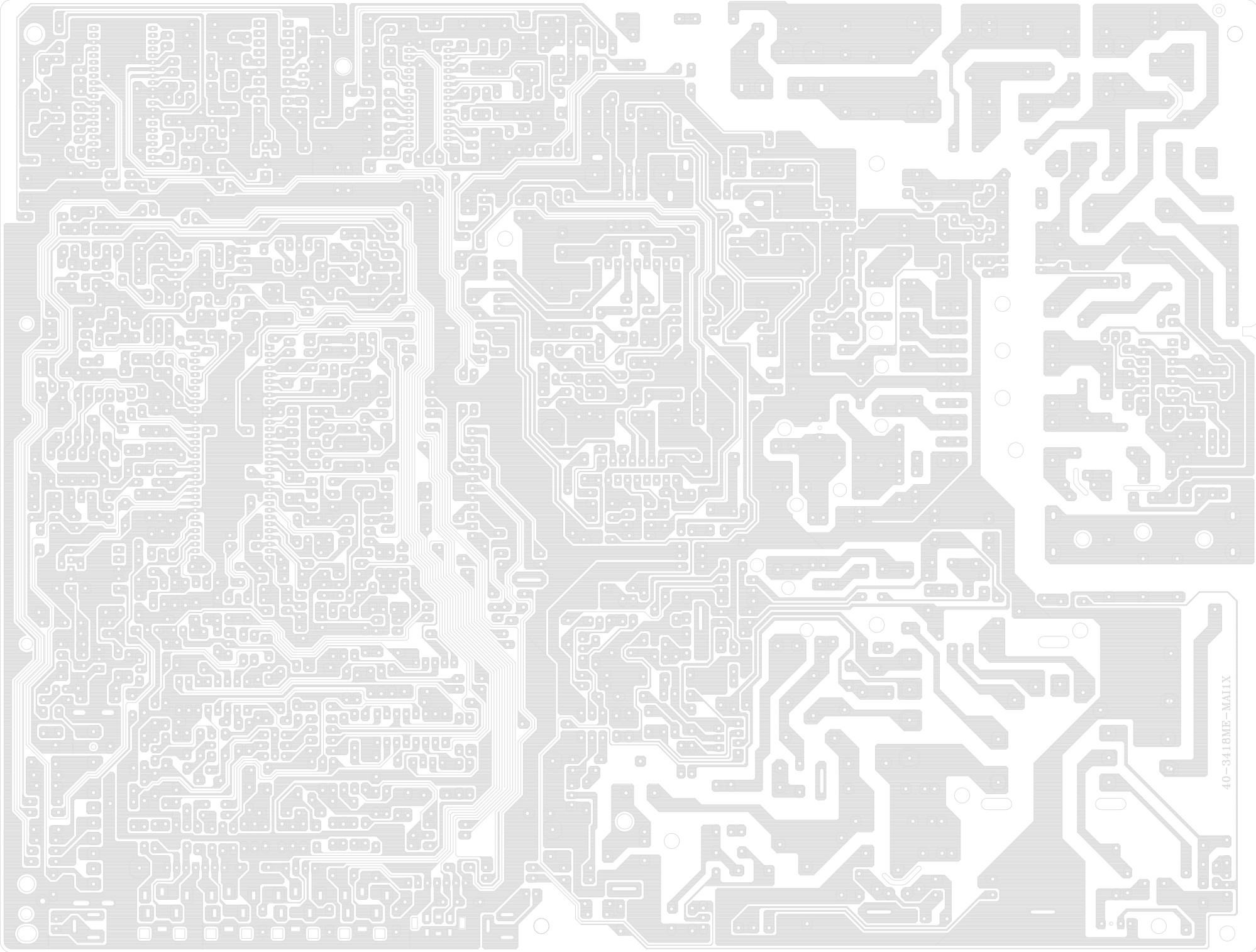
Don't try to initialize EEPROM, unless software can't work normally.

M113B Block Diagram

Prepared by Yao Xin







40-3418ME-MAILX

